

## Enlargements, Reducers in Moulded Plastic

STAHL



- > Numerous versions
  - Enlargements
  - Reducers
- > Degree of protection IP66

www.stahl.de



13897E00

	ATEX					
Zone	0	1	2	20	21	22
For use in		x	x		x	x

### Explosion Protection

#### Europe (ATEX)

Gas and dust	PTB 04 ATEX 1040 X ⊕ II 2 G Ex e II ⊕ II 2 D Ex tD A21 IP66
--------------	---

#### Certificates and approvals

Certificates	ATEX
--------------	------

#### Technical Data

##### Ambient conditions

Operation temperature	-20 ... +70 °C
-----------------------	----------------

##### Mechanical data


Degree of protection	IP66
Material	Polyamide

E10


WebCode ACC1A

## Enlargements, Reducers in Moulded Plastic

**Selection Table**

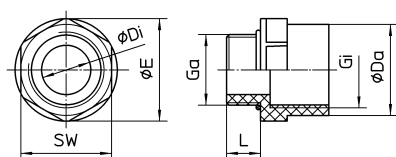
Version	Dimensions [mm]					Art. no.	Weight kg
	Da	Di	L	A/F	TL		
Enlargement metric - metric 	M16	M20	9	24	27	<b>109391</b>	0.013
	M20	M25	9	29	27	<b>109390</b>	0.008
	M25	M32	10	36	28	<b>109389</b>	0.018
	M32	M40	12	46	30	<b>109388</b>	0.023
	M40	M50	12	55	30	<b>109387</b>	0.031
	M50	M63	14	68	32	<b>109386</b>	0.044

**Selection Table**

Version	Dimensions [mm]							Art. no.	Weight kg
	Ga	Gi	L	A/F	Di	E	Type		
Reducers metric - metric 	M20	M16	9	24	14	27	form A	<b>109385</b>	0.015
	M25	M20	10	29	19	32	form B	<b>109384</b>	0.006
	M32	M20	12	36	26	40	form B	<b>109383</b>	0.013
	M32	M25	12	36	26	40	form B	<b>109382</b>	0.013
	M40	M20	12	46	32	51	form C	<b>109381</b>	0.020
	M40	M25	12	46	32	51	form C	<b>109380</b>	0.018
	M40	M32	12	46	32	51	form B	<b>109379</b>	0.016
	M50	M20	14	55	42	61	form C	<b>109378</b>	0.028
	M50	M25	14	55	42	61	form C	<b>109377</b>	0.026
	M50	M32	14	55	42	61	form C	<b>109376</b>	0.023
	M50	M40	14	55	42	61	form B	<b>109375</b>	0.015
	M63	M20	15	65	55	73	form C	<b>109374</b>	0.050
	M63	M25	15	65	55	73	form C	<b>109373</b>	0.048
	M63	M32	15	65	55	73	form C	<b>109372</b>	0.046
	M63	M40	15	65	55	73	form C	<b>109371</b>	0.041
	M63	M50	15	65	55	73	form B	<b>109370</b>	0.035

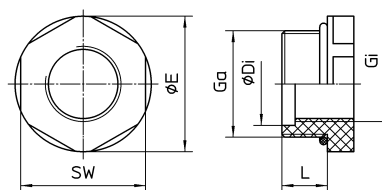
### Dimensional Drawings (All Dimensions in mm) - Subject to Alterations

Note: For dimensions see selection table



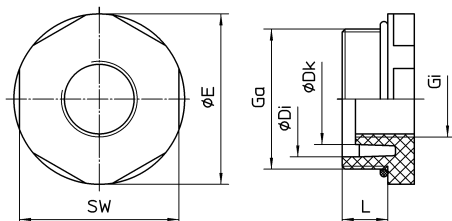
10557E00

Adaptor, reducer form A



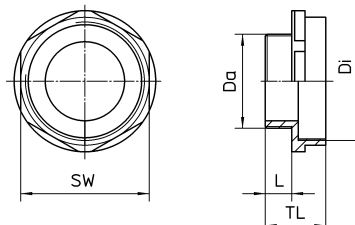
10556E00

Adaptor, reducer form B



10555E00

Adaptor, reducer form C



10619E00

Enlargement: metric - metric

### Adaptor, enlargement, reducer made of moulded plastic

We reserve the right to make alterations to the technical data, dimensions, weights, designs and products available without notice. The illustrations cannot be considered binding.