

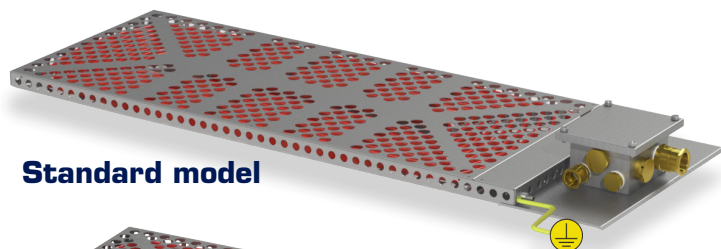
ENCLOSURE HEATER

TEF 9207 Ex e

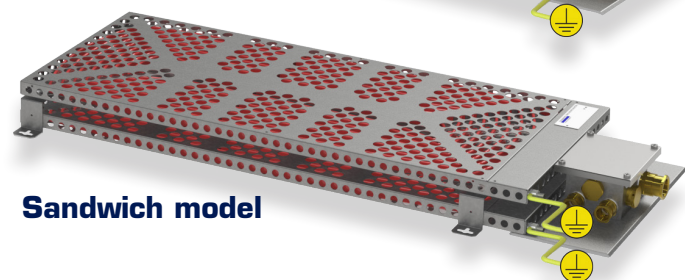
T3 240 VAC, WITH JUNCTION BOX

ZONE 1, ZONE 2 & SAFE AREA

Subject to change without prior notice TPS3008 REV. Q 07.07.2017



Standard model



Sandwich model

Globally approved Ex e, self regulating enclosure heater. AISI 316L acid resistant steel housing and junction box. Junction box for electrical connections. Delivered with power output from 100W to 600W at 0°C.

TECHNICAL DATA

Ex-protection ATEX and IECEx:	Ex II 2 G Ex e IIC T3 Gb
Ex-protection CSA:	AEx e II / Ex e II
Optional ambient temp. :	-50°C to +50°C
Max. withstand ambient temp.:	+50°C (Heater is energized) +80°C (Heater is deenergized)
Nominal voltage:	240V 50/60Hz
Inrush current:	4 x Nominal current for min. 30 sec.
Material:	AISI 316L / EN 1.4404
Electrical protection:	Connect to max. 16A circuit breaker. Earth leakage protection device or isolation device, depend on type of system of earth according to IEC 364-3, chapter 31, and EN60079-7 Annex D.
Terminals in junction box:	6mm ² : 2 + 2 pcs 2,5mm ² : 2 pcs 10mm ² PE terminals: 3 pcs
Cable glands:	1 pc. TEF E204/622 M25/ D2/9mm (Ø11,0-15,0mm) 1 pc. TEF 7302 M25 breather/ drain plug TEF 650 M20/M25 stopping plugs
IP protection:	IP66 According to EN 60529
Output accuracy:	Approx. ±10%

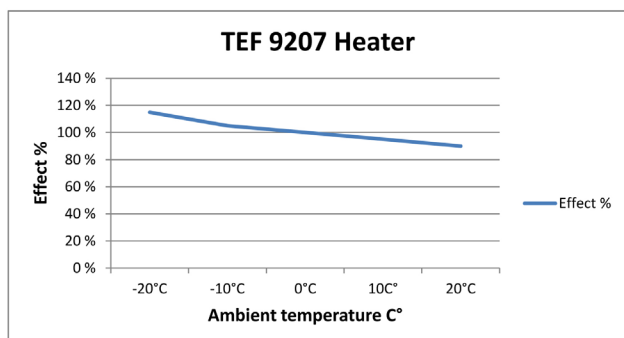
APPLICATION

- For use inside equipment enclosures and cabinets to prevent condensation and provide climatic control.
- Frost protection.

FEATURES AND BENEFITS

- Low profile, easy to fit inside cabinets.
- Self regulating heating element. Prevents overheating.
- Rugged AISI 316L, acid steel construction.
- Low maintenance.

ESTIMATED POWER OUTPUT OF HEATER IN RESPECT TO AMBIENT TEMPERATURE



APPROVALS AND CERTIFICATES

IECEx certificate No.: IECEx NEM 11.0005X

ATEX certificate No.: Nemko 11ATEX1098X

CSA Certificate: 1370701

CSA Master contract: 216432

TEF 9207 ENCLOSURE HEATER W/JUNCTION BOX

DESCRIPTION

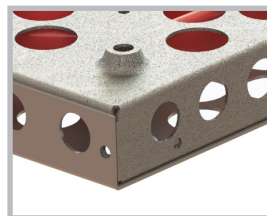
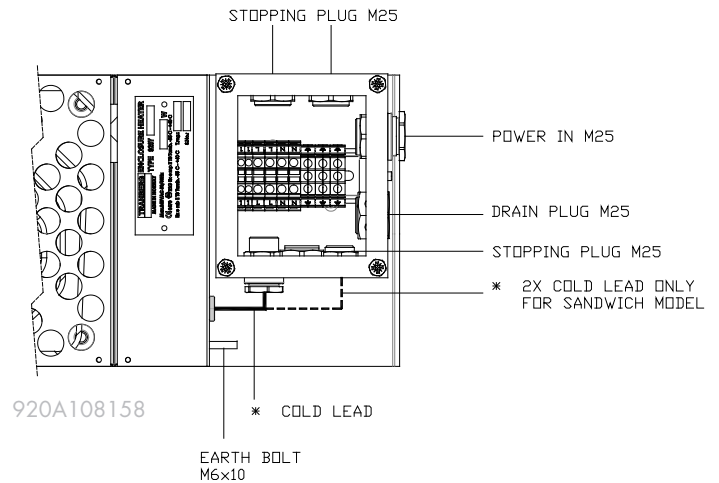
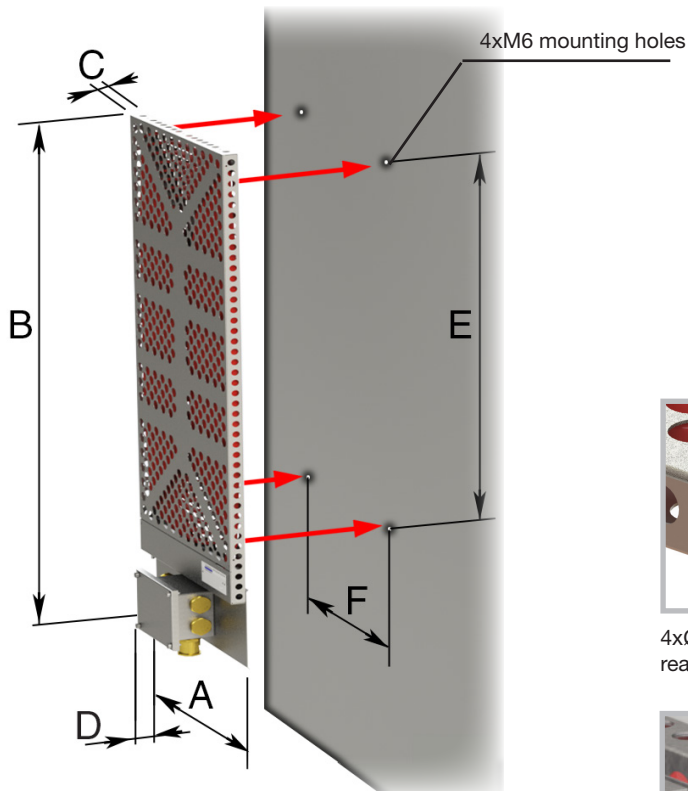
	El No.	Part No.
Enclosure heater with junction box, 100W @ 0°C	5420934	9207 1001
Enclosure heater with junction box, 200W @ 0°C	5420935	9207 1002
Enclosure heater with junction box, 300W @ 0°C	5420936	9207 1003
Enclosure heater with junction box, 400W @ 0°C (Sandwich)	5420946	9207 3004
Enclosure heater with junction box, 500W @ 0°C	5420937	9207 1005
Enclosure heater with junction box, 600W @ 0°C (Sandwich)	5420947	9207 3006
Enclosure heater with junction box, 1000W @ 0°C (Sandwich)	5420948	9207 3010

DIMENSIONS

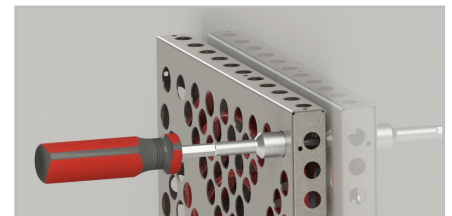
*Nominal output	Overall dimensions				Mounting dimensions		Weight
	A	B	C	D	E	F	
100W	200	430	30	80	190	160	2,92 kg.
200W	240	684	30	80	440	200	4,74 kg.
300W	280	834	30	80	590	240	6,72 kg.
400W	303	684	80	80	440	276	6,44 kg.
500W	360	1004	30	80	760	320	9,32 kg.
600W	343	834	80	80	590	316	11,76 kg.
1000W	424	1004	80	80	760	397	18,50 kg.

*Note: Nominal at still air @0°C

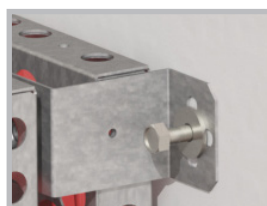
MOUNTING INSTRUCTIONS



4xØ6 mounting holes on the rear side of the heater.



Use a tool to tighten the screws firmly to secure the heater.



For the sandwich model, insert the M6 screws and a washer in the mounting brackets as shown. Use a wrench for tightening the screws firmly.

Note!
Never install the heater with junction box facing upwards.



R. Stahl Tranberg AS
 E info@stahl-tranberg.com | stahl-tranberg.com
 Main office: Strandsvingen 6 | N-4032 Stavanger | Norway | T +47 51 57 89 00 | F +47 51 57 89 50
 Office Oslo: Luhrtoppen 2 | N-1470 Lørenskog | Norway | T +47 24 08 44 10