



THE STRONGEST LINK.



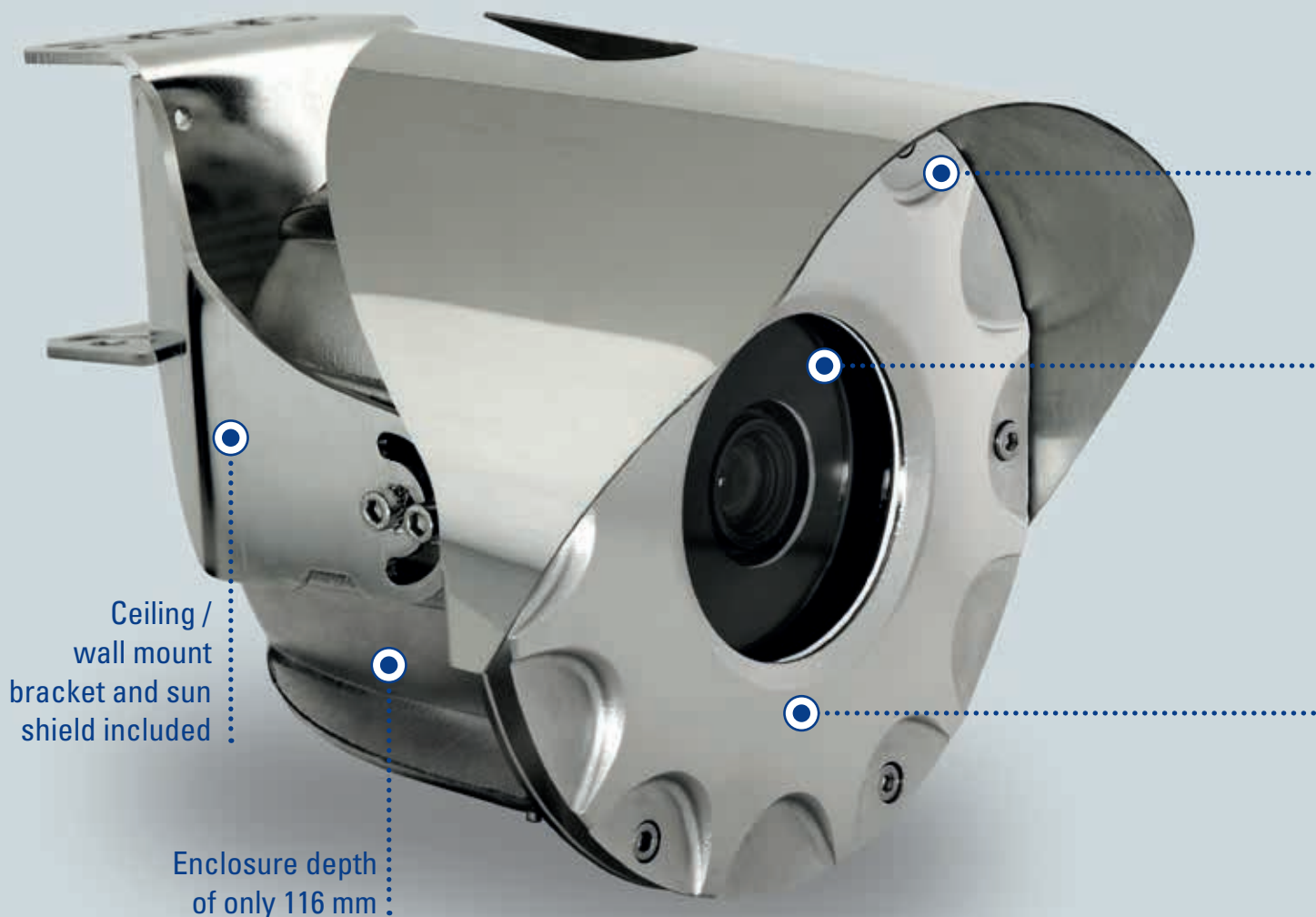
EC-910-AFZ

Compact all-round camera for hazardous areas

EC-910 – THE NEW ALL-ROUND CAMERA

THE LATEST IP TECHNOLOGY IN A COMPACT ENCLOSURE

10x ZOOM VERSION



EC-910 with ceiling / wall mount bracket and sun shield, both included in delivery

The new EC-910 combines state-of-the-art camera technology with full HD resolution, WDR, DEFOG, day/night and zoom function, delivering excellent images even under the most demanding conditions.

The high light sensitivity of the 3x zoom version makes it ideal for inspection window monitoring,

whilst the 10x zoom version is also certified by Lloyd's Register, making it the ideal choice for installation on vessels and drilling rigs.

Both camera versions are universally applicable in the oil and gas industries as well as in the chemical and pharmaceutical industries, and are certified for Zone 1, 2, 21, 22.



- Automatic and easy network integration through ONVIF S and Q
- PoE+ / 24 VAC / 24 VDC
- Full HD resolution
- 10x zoom
- Wide Dynamic Range for optimum image quality
- Defog function for fog reduction
- Day/night function with high light sensitivity
- -40 °C to +65 °C
- Zone 1, 2, 21, 22
- ATEX, IECEx, NEC, CEC, TR-EAC
- Lloyd's Register



3x ZOOM VERSION



IDEAL FOR INSPECTION WINDOW MONITORING

Light conditions inside a reactor are often difficult: dark and light areas are right next to one another.

The high light sensitivity of the EC-910-AFZ together with the WDR function ensures extremely sharp images even under demanding conditions.

This is helped by the full HD resolution, as well as by the 90° viewing angle which allows viewers to monitor large areas at a glance.

Thanks to the ONVIF Profiles S and Q, commissioning is smooth, because the camera is automatically recognized in the network by the ONVIF Device Manager.



3x zoom version without brackets and sun shield



HIGH LIGHT
SENSITIVITY

WDR AGAINST
REFLECTIONS

-40 °C
TO
+65 °C



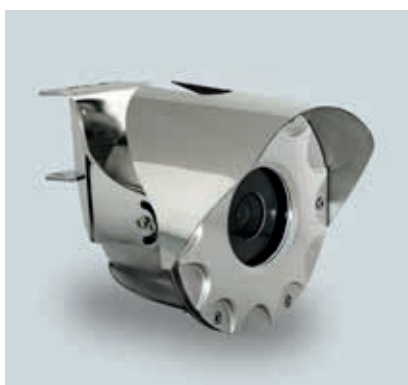
LLOYD'S REGISTER: FOR DRILLING RIGS AND VESSELS

Light conditions on drilling rigs are challenging and often too bright or dark.

The EC-910 has all functions for optimum image correction – the day/night function balances stark differences in brightness, and the WDR function combines the best images.

The 10x zoom and the full HD resolution ensure sharp, crystal clear images in hazardous areas, whatever the focus.

Lloyd's Register attests the camera's reliability with regard to temperature, corrosion and vibration resistance as well as EMC.



10x zoom version with ceiling / wall mount bracket and sun shield



LLOYD'S
REGISTER

IP69

DAY/NIGHT



EC-910 with ceiling / wall mount bracket and sun shield, both included in delivery

THE LATEST TECHNOLOGIES FOR EXCELLENT IMAGE QUALITY

The highly compact EC-910 zoom camera is ideally suited for video monitoring and process control in hazardous areas.

The full HD, 1080p camera offers multiple video streams and provides excellent image quality, depicting a scene in full detail even in difficult light conditions.

In addition to the outstanding image quality, the extremely simple and fast installation of the camera is another plus.

The camera can be provided with a pre-installed, armoured multicable and can be powered by PoE+.

The camera is supplied with a ceiling / wall mount bracket and with a sun shield as standard.

R. STAHL's EC-910-AFZ range of cameras meets every installation need, providing maximum performance and excellent value for money.

ONVIF S AND Q



ONVIF – A UNIVERSAL LANGUAGE

ONVIF (Open Network Video Interface Forum) has developed a global interface standard for IP-based security products. IP cameras can thus be seamlessly integrated in video surveillance networks worldwide.

WIDE DYNAMIC RANGE FUNCTION



WDR – OPTIMUM EXPOSURE AT ALL TIMES

The Wide Dynamic Range function assimilates large differences of brightness levels by automatically adding images with different exposures into a single scene, thus producing clear images and showing the full content of the scene.

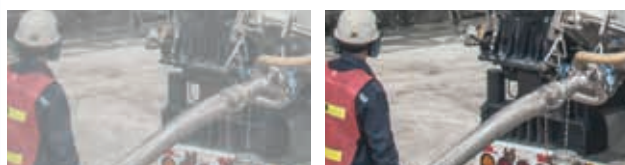
FULL HD



FULL HD FOR EXCELLENT IMAGE QUALITY

High definition 1080p (HD) camera technology generates images about five times as sharp as those generated by analogue cameras. With the aid of modern compression processes, video recordings can be retrieved from a network with terminal equipment such as PCs or smartphones, and are also available for archiving or video analysis.

DEFOG FUNCTION



DEFOG – HAZE AND FOG REDUCTION

Fog, haze or mist may considerably affect image quality. With the defog function activated, image parameters such as colour or contrast are analysed and optimised to provide clearer images.

TECHNICAL DATA AND ACCESSORIES

EC-910-AFZ-VERSIONS

Product code Name	Optical zoom	Armoured cables	Certificates	Features	Viewing angles horizontal	Sensitivity	Power supply	Protocol	Temperature range	IP protection/ enclosure	Order no. SAP
EC-910-AFZ-I03-P00	3x	without cable, 1/2" NPT thread	ATEX, IECEX, TR-EAC, Zone 1, 21, NEC Cl1 D2, CEC Cl1 Z1	Day/ Night, WDR, Full HD	90° (wide) to 32° (tele) at 1080p	ICR-ON, 0.03 lx, 1/30 s, F1.2, 50 % (HSM)	PoE+, 24 VAC, 24 VDC	ONVIF Profile S Profile Q	-40 °C to +65 °C	IP66, 67, 68, 69, stainless steel AISI 316L	264963
EC-910-AFZ-I03-P04	3x	4 m									265897
EC-910-AFZ-I03-P10	3x	10 m									265898
EC-910-AFZ-I10-P00	10x	without cable, 1/2" NPT thread	ATEX, IECEX, TR-EAC, Zone 1, 21, NEC Cl1 D2, CEC Cl1 Z1, Lloyd's Register	Day/ Night, WDR, Full HD, Defog	67° (wide) to 7,6° (tele) at 1080p	ICR-ON, 0.002 lx, 1/3 s, 30 % (HSM)					264964
C-910-AFZ-I10-P04	10x	4 m									265900
EC-910-AFZ-I10-P10	10x	10 m									265921

EC-910-AFZ BRACKETS

Wall mount bracket



Ceiling mount bracket



Pole/corner adapter



Included in delivery

Optional

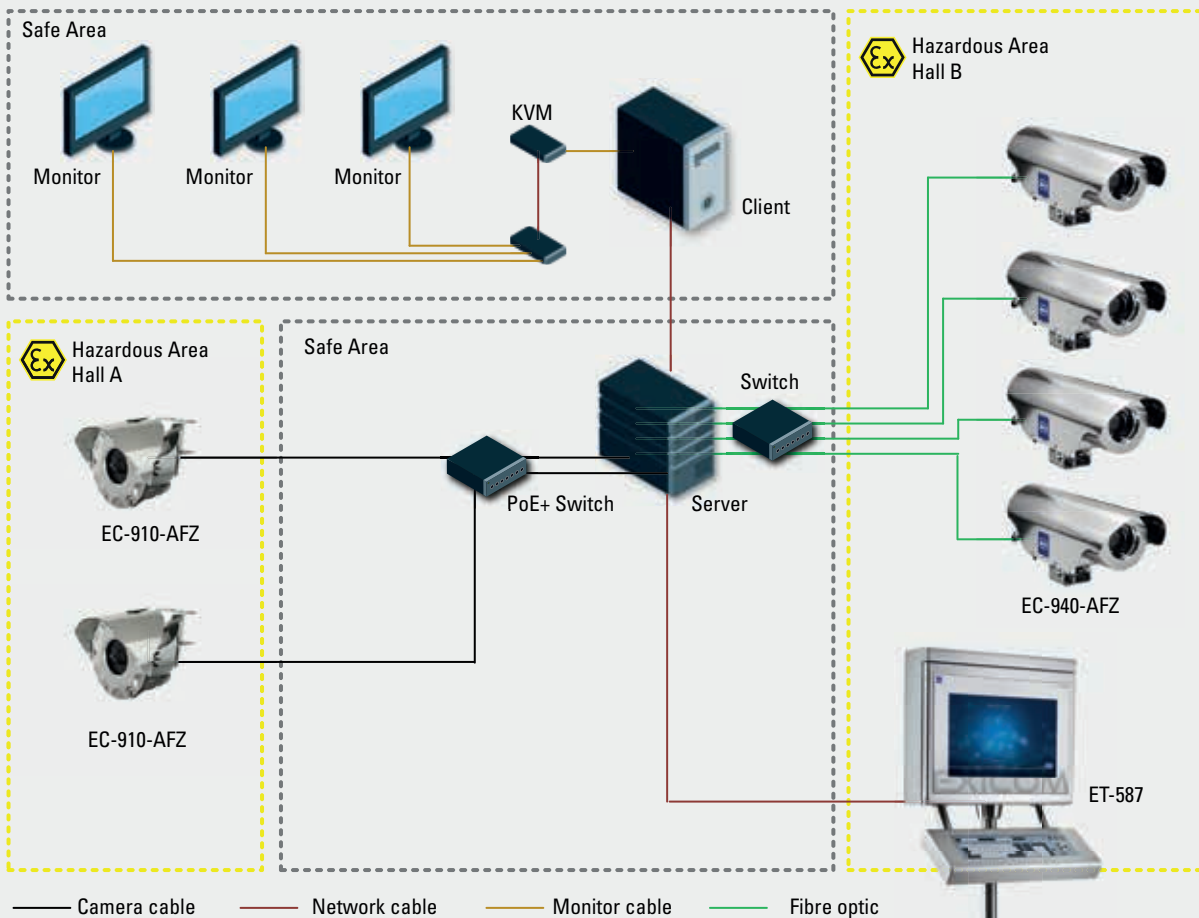
TAILOR-MADE CCTV SYSTEM SOLUTIONS

CCTV SYSTEMS – tailor-made solutions for hazardous areas. For close and detailed monitoring of all production areas and processes in hazardous areas we will configure CCTV system solutions tailored to meet the requirements of your system.

Creating video surveillance plans for several hazardous areas is as much part of our CCTV experts' daily work as the connection to the control system with on-site local monitoring.

Our experts integrate server / client structures, KVM as well as PoE switches and identify the best possible configuration for you.

EXAMPLE OF A CCTV SYSTEM SOLUTION IN TWO HAZARDOUS AREAS



COMPLETE PROJECT HANDLING – ONE CONTACT

From planning to maintenance – you will have one personal CCTV expert at your side. Your contact for the entire project will support you in all matters, including train-

ing sessions, commissioning, FAT, SAT and system configuration, and in case of an integration into existing surveillance systems.

CCTV DESIGN ✓

SYSTEM CONFIGURATION ✓

PROJECT ENGINEERING ✓

DOCUMENTATION ✓

FACTORY ACCEPTANCE TEST (FAT) ✓

SITE ACCEPTANCE TEST (SAT) ✓

COMMISSIONING / TRAINING ✓

SERVICE / MAINTENANCE ✓



At R. STAHL, you will have a primary contact throughout the entire project.

Together with the team, he or she will handle all matters relating to the project – from planning to commissioning.

THE QUICKEST WAY TO YOUR CCTV SOLUTION

PERSONAL INQUIRIES



You can count on us

With the aid of modern communication tools, we will be happy to present and discuss with you possible CCTV system solutions. You can be sure to receive good advice anytime, wherever you are.

+49 221 76806-1200
office@stahl-camera.de

ONLINE INQUIRIES

SYSTEM FINDER

WE CONFIGURE THE BEST POSSIBLE CCTV SYSTEM SOLUTION FOR YOUR PLANT.

Our Smart CCTV System has been developed to assist you in selecting the optimal CCTV system solution for your production plant from the great variety of available systems.

Simply follow the instructions with our interactive tool to identify the right system. To be able to meet your individual requirements, please answer the following 3 key questions. We will use your answers to generate a top-ranking range of suggestions.

Filling out the questionnaire does not imply any obligation.



TYPE OF APPLICATION*

- SYSTEM - OVERVIEW
- LAND USE
- CHANGING PLANT

INTERESTED IN**

- SMART - COMPLETE CCTV SOLUTION FOR PRODUCTION
- INNOVATION - COMPONENTS AND CAMERA DRUG

There for you 24/7

We have developed a CCTV SYSTEM FINDER to configure the system solution best suited to your needs. Enter the key figures for your CCTV system solution and our experts will draw up preliminary suggestions.

stahl-camera.de



R. STAHL Camera Systems GmbH
Adolf-Grimme-Allee 8
50829 Cologne, Germany
T +49 221 76806-1200
F +49 221 76806-4200
r-stahl.com