

Stopping plugs made of moulded material

Series 8290

STAHL



- Plastic stopping plugs for sealing open drilled holes
- For thread sizes from M16 to M63
- For Ex e enclosures

E10

MY R. STAHL 8290A



R. STAHL's Series 8290 plastic stopping plugs can be used to seal unused drilled holes in Ex e enclosures ("increased safety" type of protection). To ensure that they remain robust during use, they are designed to be impact-resistant according to IEC/EN 60079-0 and IEC/EN 60079-7 and are protected against coming loose.

	IECEx / ATEX					
Zone	0	1	2	20	21	22
Installation in		•	•		•	•

Selection Table							
Drive	Hexagon socket						
Thread size	Thread length	Width across flats	Width across corners	Hexagon socket width across flats	Packaging unit	Art. No.	Weight
M16	11 mm	20 mm	22 mm	8 mm	100	285775	300 g
M20	11 mm	24 mm	26 mm	10 mm	1	143522	7 g
M20	11 mm	24 mm	26 mm	10 mm	100	285773	500 g
M25	10.5 mm	29 mm	31 mm	10 mm	100	285774	700 g
M32	11.2 mm	36 mm	38 mm	10 mm	50	285779	600 g
M40	14 mm	46 mm	53 mm	10 mm	30	285776	480 g
M50	14 mm	55 mm	61 mm	10 mm	30	285777	780 g
M63	14 mm	68 mm	75 mm	10 mm	30	285778	1.68 kg

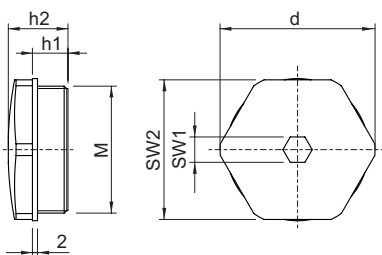
Technical Data	
Explosion Protection	
IECEx gas explosion protection	Ex eb IIC Gb
IECEx dust explosion protection	Ex tb IIIC Db
ATEX gas explosion protection	Ⓔ II 2 G Ex eb IIC Gb
ATEX dust explosion protection	Ⓔ II 2 D Ex tb IIIC Db
Certificates	ATEX (PTB), Brazil (ULB), China (CQST), IECEx (PTB), Korea (KGS)
Declaration of Conformity	ATEX (EUK), China (CCC)
Ambient Conditions	
Ambient temperature	-60 °C ... +80 °C
Mechanical Data	
Degree of protection (IP)	IP66

Technical Data

Mechanical Data

Degree of protection note	acc. to IEC/EN 60529
Silicone-free	Yes
Self-extinguishing	Yes
Flame-retardant	Yes
Material	Polyamide, Glass fibre reinforced
Sealing ring material	EPDM

Dimensional Drawings (All Dimensions in mm [inches]) – Subject to Alterations



M = Thread size d = Width across corners
 h1 = Thread length h2 = Dimension h2
 SW1 = Hexagon socket width across flats
 SW2 = Width across flats