



- Lamp: Flashing beacon – XENON (5 J)/continuous beacon – LED (6.5 W)
- Type of protection: Ex d
- Class: IP66/IP67 (IEC 60529/NEMA 4X)
- Corrosion-resistant GRP enclosure
- Including stainless steel protective cage
- Eight light-amplifying Fresnel lens colours can be ordered
- Low weight (2.25 kg)

E5

MY R. STAHL FX15A



The **FX15 product series** provides visual signals as a continuous beacon with LED or a 5 J flashing beacon with xenon flashes. The enclosure is made from glass fibre reinforced polyester. The product series is intended for use in hazardous and harsh environments.

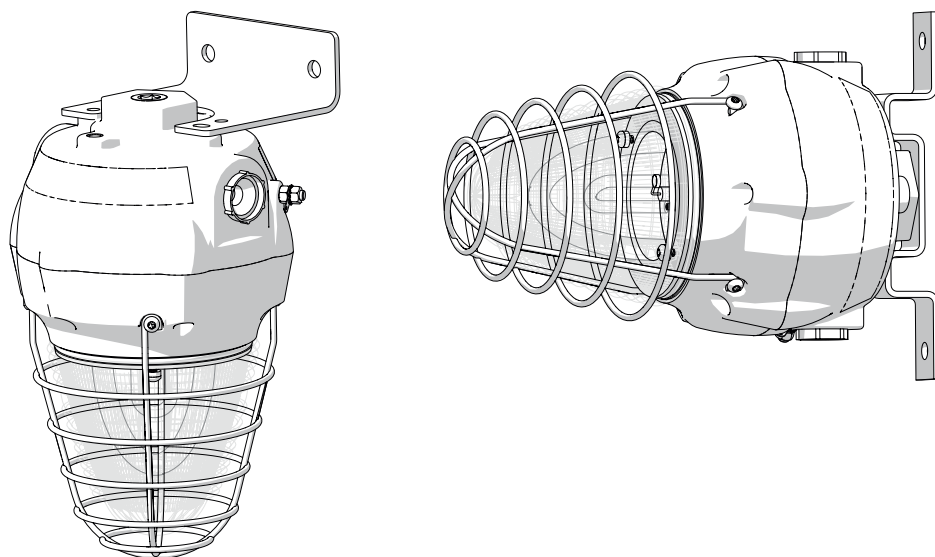
| | IECEX / ATEX | | | | | |
|-----------------|--------------|---|---|----|----|----|
| Zone | 0 | 1 | 2 | 20 | 21 | 22 |
| Installation in | | • | • | | • | • |

| Selection Table | | | | | |
|-----------------|------------------------------|------------------------------|------------------------------------|----------|---------|
| Lamp | LED | | | | |
| Lens colour | Rated operational voltage AC | Rated operational voltage DC | Product Type | Art. No. | Weight |
| Amber | 100 ... 254 V | – | FX15/C-P-060-A-EN-SF-A-ST-00-00-00 | 247077 | 2.25 kg |
| | – | 21.1 ... 24 V | FX15/21-DH0000-AW0003-ST0000-0000 | 284502 | 2.23 kg |
| Blue | 100 ... 254 V | – | FX15/C-P-060-B-EN-SF-A-ST-00-00-00 | 247069 | 2.25 kg |
| | – | 24 V | FX15/C-D-060-B-EN-SF-A-ST-00-00-00 | 247070 | 2.23 kg |
| Clear | 100 ... 254 V | – | FX15/C-P-060-C-EN-SF-A-ST-00-00-00 | 247085 | 2.25 kg |
| | – | 24 V | FX15/C-D-060-C-EN-SF-A-ST-00-00-00 | 247086 | 2.23 kg |
| Green | 100 ... 254 V | – | FX15/C-P-060-G-EN-SF-A-ST-00-00-00 | 247061 | 2.25 kg |
| | – | 21.1 ... 24 V | FX15/21-DH0000-GW0003-ST0000-0000 | 309585 | 2.23 kg |
| | – | 24 V | FX15/C-D-060-G-EN-SF-A-ST-00-00-00 | 247062 | 2.23 kg |
| Magenta | – | 24 V | FX15/C-D-060-M-EN-SF-A-ST-00-00-00 | 251767 | 2.23 kg |
| Red | 100 ... 254 V | – | FX15/C-P-060-R-EN-SF-A-ST-00-00-00 | 247093 | 2.25 kg |
| | – | 21.1 ... 24 V | FX15/21-DH0000-RR0003-ST0000-0000 | 284501 | 2.23 kg |
| Yellow | – | 21.1 ... 24 V | FX15/21-DH0000-YW0003-ST0000-0000 | 284503 | 2.23 kg |

| Selection Table | | | | | |
|-----------------|------------------------------|------------------------------|------------------------------------|----------|---------|
| Lamp | Xenon flash tubes | | | | |
| Lens colour | Rated operational voltage AC | Rated operational voltage DC | Product Type | Art. No. | Weight |
| Amber | 115 V | – | FX15/C-L-050-A-EN-SF-A-ST-00-00-00 | 217981 | 2.25 kg |
| | 230 V | – | FX15/C-N-050-A-EN-SF-A-ST-00-00-00 | 217982 | 2.25 kg |
| | – | 21.1 ... 24 V | FX15/21-D05000-AW0003-ST0000-0000 | 284504 | 2.23 kg |
| | | 24 V | FX15/C-D-050-A-EN-SF-A-ST-00-00-00 | 217979 | 2.23 kg |
| | | 48 V | FX15/C-F-050-A-EN-SF-A-ST-00-00-00 | 217980 | 2.23 kg |
| Blue | 230 V | – | FX15/C-N-050-B-EN-SF-A-ST-00-00-00 | 218002 | 2.25 kg |
| | – | 24 V | FX15/C-D-050-B-EN-SF-A-ST-00-00-00 | 217992 | 2.23 kg |
| | | 48 V | FX15/C-F-050-B-EN-SF-A-ST-00-00-00 | 217976 | 2.23 kg |
| Clear | 115 V | – | FX15/C-L-050-C-EN-SF-A-ST-00-00-00 | 217983 | 2.25 kg |
| | 230 V | – | FX15/C-N-050-C-EN-SF-A-ST-00-00-00 | 217995 | 2.25 kg |
| | – | 24 V | FX15/C-D-050-C-EN-SF-A-ST-00-00-00 | 217989 | 2.23 kg |
| | | 48 V | FX15/C-F-050-C-EN-SF-A-ST-00-00-00 | 217999 | 2.23 kg |
| Green | 115 V | – | FX15/C-L-050-G-EN-SF-A-ST-00-00-00 | 217993 | 2.25 kg |
| | 230 V | – | FX15/C-N-050-G-EN-SF-A-ST-00-00-00 | 218003 | 2.25 kg |
| | – | 24 V | FX15/C-D-050-G-EN-SF-A-ST-00-00-00 | 217997 | 2.23 kg |
| | | 48 V | FX15/C-F-050-G-EN-SF-A-ST-00-00-00 | 217977 | 2.23 kg |
| Red | 115 V | – | FX15/C-L-050-R-EN-SF-A-ST-00-00-00 | 217973 | 2.25 kg |
| | 230 V | – | FX15/C-N-050-R-EN-SF-A-ST-00-00-00 | 217974 | 2.25 kg |
| | – | 21.1 ... 24 V | FX15/21-D05000-RW0003-ST0000-0000 | 284505 | 2.23 kg |
| | | 24 V | FX15/C-D-050-R-EN-SF-A-ST-00-00-00 | 217971 | 2.23 kg |
| | | 48 V | FX15/C-F-050-R-EN-SF-A-ST-00-00-00 | 217972 | 2.23 kg |
| Yellow | 230 V | – | FX15/C-N-050-Y-EN-SF-A-ST-00-00-00 | 218001 | 2.25 kg |
| | – | 21.1 ... 24 V | FX15/21-D05000-YW0003-ST0000-0000 | 284506 | 2.23 kg |
| | | 24 V | FX15/C-D-050-Y-EN-SF-A-ST-00-00-00 | 217991 | 2.23 kg |
| | | 48 V | FX15/C-F-050-Y-EN-SF-A-ST-00-00-00 | 217975 | 2.23 kg |

| Technical Data | | | | |
|---------------------------------|--------------------------------|----------------------------------|--------------------------------|----------------------------------|
| Variant | FX15/21 | FX15/C-N 230 V AC | FX15/C-L 115 V AC | FX15/C-F 48 V DC |
| Explosion Protection | | | | |
| IECEx gas explosion protection | Ex db IIC T6 / T4 Gb | Ex d IIC T6 ... T4 Gb | Ex d IIC T5 / T4 Gb | Ex d IIC T6 ... T4 Gb |
| IECEx dust explosion protection | Ex tb IIIC T80 °C / T100 °C Db | Ex tb IIIC T75 °C ... T105 °C Db | Ex tb IIIC T83 °C / T113 °C Db | Ex tb IIIC T73 °C ... T103 °C Db |

| Technical Data | | | | |
|---|--|--|--|--|
| Variant | FX15/21 | FX15/C-N 230 V AC | FX15/C-L 115 V AC | FX15/C-F 48 V DC |
| Explosion Protection | | | | |
| ATEX gas explosion protection | Ⓔ II 2 G Ex db IIC T6 / T4 Gb | Ⓔ II 2 G Ex d IIC T6 ... T4 Gb | Ⓔ II 2 G Ex d IIC T5 / T4 Gb | Ⓔ II 2 G Ex d IIC T6 ... T4 Gb |
| ATEX dust explosion protection | Ⓔ II 2 D Ex tb IIIC T80 °C / T100 °C Db | Ⓔ II 2 D Ex tb IIIC T75 °C ... T105 °C Db | Ⓔ II 2 D Ex tb IIIC T83 °C / T113 °C Db | Ⓔ II 2 D Ex tb IIIC T73 °C ... T103 °C Db |
| Certificates | ATEX (BVIS), China (CQST), IECEx (BVIS) | ATEX (BAS), IECEx (BAS) | ATEX (BAS), IECEx (BAS) | ATEX (BAS), IECEx (BAS) |
| Declaration of Conformity | ATEX (EUK) | ATEX (EUK) | ATEX (EUK) | ATEX (EUK) |
| Electrical Data | | | | |
| Tolerance | -10 ... 10 % | -10 ... 10 % | -10 ... 10 % | -10 ... 10 % |
| Ambient Conditions | | | | |
| Ambient temperature °C | -60 – 50 °C | -60 – 40 °C | -60 – 40 °C | -60 – 40 °C |
| Ambient temperature | -60 °C ... +50 °C (T6) -60 °C ... +70 °C (T4) | -60 °C ... +40 °C (T6) -60 °C ... +55 °C (T5) -60 °C ... +70 °C (T4) | -60 °C ... +40 °C (T5) -60 °C ... +55 °C (T4) | -60 °C ... +40 °C (T6) -60 °C ... +55 °C (T5) -60 °C ... +70 °C (T4) |
| Operating temperature | | -55 °C ... +70 °C | -55 °C ... +55 °C | -50 °C ... +70 °C |
| Mechanical Data | | | | |
| Degree of protection (IP) (IEC 60529) | IP66 | IP66/IP67 | IP66/IP67 | IP66/IP67 |
| Enclosure material | Polyester, Glass fibre reinforced | Polyester (GRP), Glass fibre reinforced | Polyester (GRP), Glass fibre reinforced | Polyester (GRP), Glass fibre reinforced |
| Enclosure colour | Black | Black | Black | Black |
| Seal | O-ring seal | O-ring seal | O-ring seal | O-ring seal |
| Sealing material | Red silicone 70 | Red silicone 70 | Red silicone 70 | Red silicone 70 |
| Material dome | Polycarbonate, prismatic | Polycarbonate, prismatic | Polycarbonate, prismatic | Polycarbonate, prismatic |
| Wire guard material | Stainless steel | Stainless steel | Stainless steel | Stainless steel |
| Max. solid connection terminals | 2.5 mm ² | 2.5 mm ² | 2.5 mm ² | 2.5 mm ² |
| Max. finely stranded connection terminals | 2.5 mm ² | 2.5 mm ² | 2.5 mm ² | 2.5 mm ² |
| Mounting / Installation | | | | |
| Mounting part material | Stainless steel | Stainless steel | Stainless steel | Stainless steel |
| Note about mounting | Can be ordered as accessories | Can be ordered as accessories | Can be ordered as accessories | Can be ordered as accessories |
| Connection type | Push in | Screw terminal | Screw terminal | Screw terminal |
| Components | | | | |
| Drilled holes | 3 x M20 | 3 x M20 | 3 x M20 | 3 x M20 |
| Cable glands and entries | can be ordered as an accessory | Can be ordered as accessories | Can be ordered as accessories | Can be ordered as accessories |
| Stopping plugs | 3 x dust cap | 3 x dust cap | 3 x dust cap | 3 x dust cap |
| You can find more technical data online at r-stahl.com . MY R. STAHL FX15A | | | | |



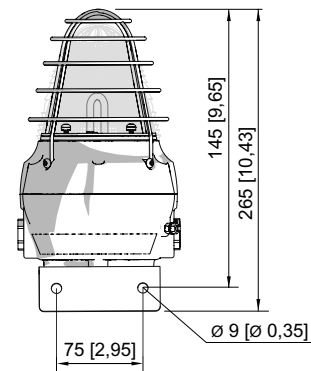
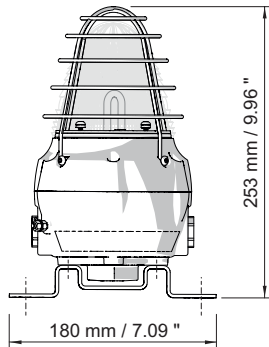
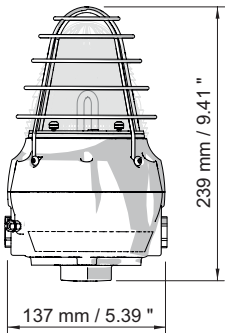
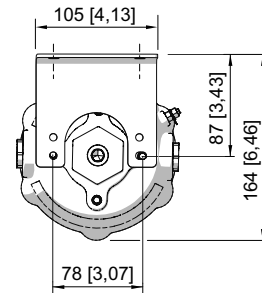
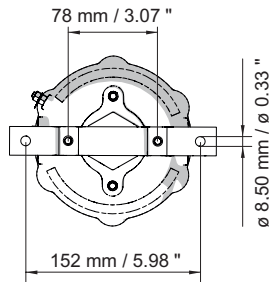
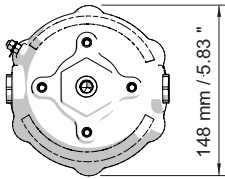
Accessories

| Figure | Description | Art. No. | Weight |
|--------------------------|--|----------|--------|
| Metal cable gland | | | |
| | Ex d and Ex e cable gland with compound for all types of armoured cables (SWA, wire-braid, tape) (nickel-plated brass) Type 20PX2K, M20 x 1.5 | 109428 | 240 g |
| | Ex d and Ex e cable glands with RapidEx sealing system for all types of unarmoured cables and wire-braid-armoured cables (nickel-plated brass) Type 20PX2K-REX, M20 x 1.5 | 246649 | 240 g |
| | Ex d and Ex e cable glands with compound for all types of unarmoured cables and wire-braid-armoured cables (nickel-plated brass) Type 20PXSS2K, M20 x 1.5 | 109441 | 200 g |
| | Ex d and Ex e cable glands with RapidEx sealing system for all types of unarmoured cables and wire-braid-armoured cables (nickel-plated brass) Type 20PXSS2K-REX, M20 x 1.5 | 246605 | 200 g |
| | Ex d and Ex e cable gland for all types of unarmoured cables (SWA, wire-braid, tape) (nickel-plated brass) with a special compensating sliding seal (CDS) Type 20T3CDS, M20 x 1.5 | 246561 | 280 g |
| Stopping plug | | | |
| | Stainless steel stopping plug M20x1.5 with hexagon insert bit | 251101 | 79 g |

| Accessories | | | |
|-----------------------------|---|----------|--------|
| Figure | Description | Art. No. | Weight |
| Mounting accessories | | | |
| | Stainless steel L-bracket, standard version | 221711 | 287 g |
| | Stainless steel L-bracket, long version | 247371 | 280 g |
| | Stainless steel fastening bracket | 221712 | 155 g |
| | Adapter plate for pipe clamp fastening | 256519 | 630 g |
| | Stainless steel sun shield | 262077 | 200 g |
| | Pipe clamp, R 1 1/4" | 120812 | 500 g |
| | Pipe clamp, R 1 1/2" | 120819 | 470 g |
| | Pipe clamp, R 2" | 120823 | 500 g |

| Spare Parts | | | |
|---------------------|---|----------|--------|
| Figure | Description | Art. No. | Weight |
| Fresnel lens | | | |
| | Fresnel lens, amber, spare | 292060 | 180 g |
| | Fresnel lens, blue, spare | 292141 | 180 g |
| | Fresnel lens, green, spare | 292143 | 180 g |
| | Fresnel lens, clear, spare | 292144 | 180 g |
| | Fresnel lens, red, spare | 292147 | 180 g |
| | Fresnel lens, yellow, spare | 292142 | 180 g |
| | Fresnel lens, magenta | 292145 | 180 g |
| PCB | | | |
| | Connection PCB | 223579 | 20 g |
| | Electronic PCB, 24 V DC, 5 J (available for FL6S, FX15, YL6S) | 223635 | 80 g |
| | Electronic PCB, 115 V AC, 5 joules | 223632 | 118 g |
| | Electronic PCB, 230 V AC, 5 Joule | 223580 | 100 g |
| Lamp | | | |
| | Xenon lamp | 223636 | 6 g |

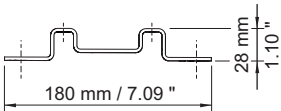
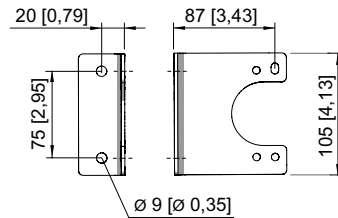
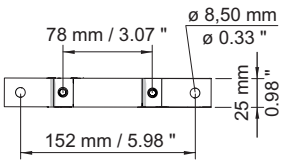
☐ FX15 flashing beacons are supplied without a bracket. These must be ordered separately (see accessories table).



FX15 flashing beacon

FX15 flashing beacon with fastening bracket

FX15 flashing beacon with L-bracket



L-bracket

Fastening bracket