

Signalling devices

Visual signalling device LED continuous beacon

In flameproof enclosure

FX15/C-P-060-G-EN-SF-A-ST-00-00-00 Art. No. 247061

STAHL



- Lamp: Flashing beacon – XENON (5 J)/continuous beacon – LED (6.5 W)
- Type of protection: Ex d
- Class: IP66/IP67 (IEC 60529/NEMA 4X)
- Corrosion-resistant GRP enclosure
- Including stainless steel protective cage
- Eight light-amplifying Fresnel lens colours can be ordered
- Low weight (2.25 kg)

MY R. STAHL FX15A



The **FX15 product series** provides visual signals as a continuous beacon with LED or a 5 J flashing beacon with xenon flashes. The enclosure is made from glass fibre reinforced polyester. The product series is intended for use in hazardous and harsh environments.

Technical Data

Explosion Protection

| | |
|---------------------------------|--------------------------------|
| Area of application | IECEX European Union (ATEX) |
| Application range (zones) | 1, 2, 21, 22 |
| IECEX gas certificate | IECEX BAS 13.0003 |
| IECEX gas explosion protection | Ex d IIC T6 Gb |
| IECEX dust certificate | IECEX BAS 13.0003 |
| IECEX dust explosion protection | Ex tb IIIC T85 °C Db |
| ATEX gas certificate | Baseefa 13 ATEX 0006 |
| ATEX gas explosion protection | ⊕ II 2 G Ex d IIC T6 Gb |
| ATEX dust certificate | Baseefa 13 ATEX 0006 |
| ATEX dust explosion protection | ⊕ II 2 D Ex tb IIIC T85 °C Db |
| Certificates | ATEX (BAS), IECEX (BAS) |
| Declaration of conformity | ATEX (EUK) |

Electrical Data

| | |
|------------------------------|---------------|
| Rated operational voltage AC | 100 ... 254 V |
| Power | 3.7 W |
| Tolerance | -10 ... 10 % |

Lighting Data

| | |
|------------------------------|-------|
| Lamp | LED |
| Effective luminous intensity | 51 cd |
| Luminous flux | 45 lm |

Ambient Conditions

| | |
|-----------------------|------------------------|
| Ambient temperature | -60 °C ... +70 °C (T6) |
| Operating temperature | -60 °C ... +50 °C |

Mechanical Data

| | |
|---------------------------------------|-----------|
| Degree of protection (IP) | IP66 |
| Degree of protection (IP) (IEC 60529) | IP66/IP67 |

Signalling devices



Visual signalling device LED continuous beacon

In flameproof enclosure

FX15/C-P-060-G-EN-SF-A-ST-00-00-00 Art. No. 247061

Mechanical Data

| | |
|---|---|
| Enclosure material | Polyester (GRP), Glass fibre reinforced |
| Enclosure colour | Black |
| Sealing material | Red silicone 70 |
| Material dome | Polycarbonate, prismatic |
| Wire guard material | Stainless steel |
| Max. solid connection terminals | 2.5 mm ² |
| Max. finely stranded connection terminals | 2.5 mm ² |
| Type of connection cable | Solid Finely stranded |
| Width | 137 mm |
| Height | 239 mm |
| Length | 148 mm |
| Lens colour | Green |
| Seal | O-ring seal |
| Weight | 2.25 kg |
| Weight | 4.96 lb |

Mounting / Installation

| | |
|------------------------|-------------------------------|
| Connection type | Screw terminal |
| Mounting part material | Stainless steel |
| Note about mounting | Can be ordered as accessories |

Components

| | |
|--------------------------|--------------------------------|
| Drilled holes | 3 x M20 |
| Cable glands and entries | can be ordered as an accessory |
| Stopping plugs | 3 x dust cap |
| Wire guard | Yes |

Technical Drawings – Subject to Alterations



Signalling devices

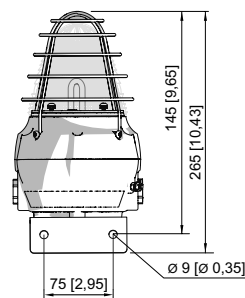
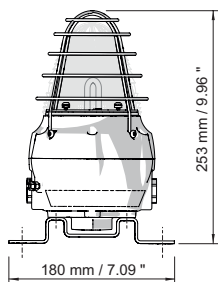
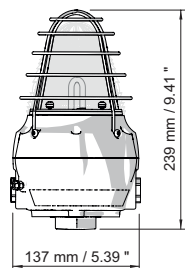
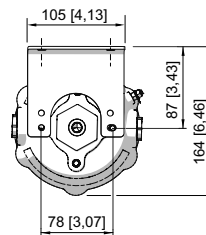
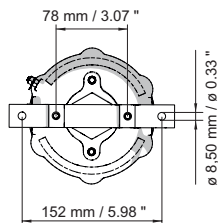
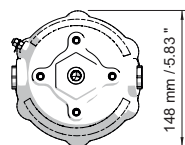
Visual signalling device LED continuous beacon

In flameproof enclosure

FX15/C-P-060-G-EN-SF-A-ST-00-00-00 Art. No. 247061



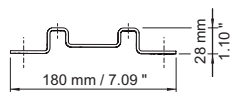
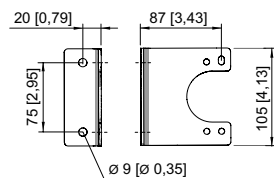
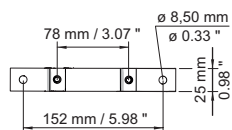
Dimensional Drawings (All Dimensions in mm [inches]) – Subject to Alterations



FX15 flashing beacon

FX15 flashing beacon with fastening bracket

FX15 flashing beacon with L-bracket



L-bracket

Fastening bracket

Accessories

Metal cable gland

Art. No.

| | | |
|--|--|---------------|
| | <p>Ex d and Ex e cable gland with compound for all types of armoured cables (SWA, wire-braid, tape) (nickel-plated brass) Type 20PX2K, M20 x 1.5</p> | <p>109428</p> |
| | <p>Ex d and Ex e cable glands with RapidEx sealing system for all types of unarmoured cables and wire-braid-armoured cables (nickel-plated brass) Type 20PX2K-REX, M20 x 1.5</p> | <p>246649</p> |
| | <p>Ex d and Ex e cable glands with compound for all types of unarmoured cables and wire-braid-armoured cables (nickel-plated brass) Type 20PXSS2K, M20 x 1.5</p> | <p>109441</p> |
| | <p>Ex d and Ex e cable glands with RapidEx sealing system for all types of unarmoured cables and wire-braid-armoured cables (nickel-plated brass) Type 20PXSS2K-REX, M20 x 1.5</p> | <p>246605</p> |
| | <p>Ex d and Ex e cable gland for all types of unarmoured cables (SWA, wire-braid, tape) (nickel-plated brass) with a special compensating sliding seal (CDS) Type 20T3CDS, M20 x 1.5</p> | <p>246561</p> |

Signalling devices

STAHL

Visual signalling device LED continuous beacon

In flameproof enclosure

FX15/C-P-060-G-EN-SF-A-ST-00-00-00 Art. No. 247061

Stopping plug

Art. No.

| | | |
|--|---|--------|
|  | Stainless steel stopping plug M20x1.5 with hexagon insert bit | 251101 |
|--|---|--------|

Mounting accessories


Art. No.

| | | |
|--|---|--------|
|  | Stainless steel L-bracket, standard version | 221711 |
| | Stainless steel L-bracket, long version | 247371 |
|  | Stainless steel fastening bracket | 221712 |
|  | Adapter plate for pipe clamp fastening | 256519 |
|  | Stainless steel sun shield | 262077 |
|  | Pipe clamp, R 1 1/4" | 120812 |
| | Pipe clamp, R 1 1/2" | 120819 |
| | Pipe clamp, R 2" | 120823 |

Spare Parts


Flange

Art. No.

| | | |
|--|--|--------|
|  | Flange, ATEX, green (available for FL6S, FX15, YL6S) | 243405 |
|--|--|--------|

Fresnel lens

Art. No.

| | | |
|--|----------------------------|--------|
|  | Fresnel lens, green, spare | 292143 |
|--|----------------------------|--------|

We reserve the right to make alterations to the technical data, dimensions, weights, designs and products available without notice. The illustrations cannot be considered binding.