

8118/121-805 Art. No. 133114



- Resistant Ex e enclosure, universally usable as connection or junction boxes and/or to safeguard electric distributors up to 6.3 A
- IP66 degree of protection
- With mantle terminals or with a combination of mantle terminals and miniature fuses (optional)

### MY R. STAHL 8118A



R. STAHL Series 8118 junction boxes are equipped with 4, 5 or 8 mantle terminals depending on their design size. As an option, miniature fuses can still be installed in addition. Junction boxes are therefore also suitable for safeguarding. The robust enclosure made from glass fibre reinforced polyester resin can be equipped with plastic or metal cable glands.

## Technical Data

### Explosion Protection

Area of application	European Union (ATEX) IECEX
Application range (zones)	1, 2, 21, 22
IECEX gas certificate	IECEX PTB 06.0026
IECEX gas explosion protection	Ex eb IIC T6 / T5 Gb
IECEX dust certificate	IECEX PTB 06.0026
IECEX dust explosion protection	Ex tb IIIC T80 °C / T95 °C Db
ATEX gas certificate	PTB 99 ATEX 3103
ATEX gas explosion protection	⊕ II 2 G Ex eb IIC T6 / T5 Gb
ATEX dust certificate	PTB 99 ATEX 3103
ATEX dust explosion protection	⊕ II 2 D Ex tb IIIC T80 °C / T95 °C Db
Certificates	ATEX (PTB), Brazil (ULB), China (NEPSI), IECEX (PTB), India (PESO), Korea (KTL)
Ship approval	DNV
Declaration of conformity	China (CCC)
Explosion protection note	For product label, see area of application.

### Electrical Data

Rated operational voltage AC	0 ... 750 V
Rated operational voltage AC	750 V
Permissible rated operational current with 7 loaded terminals	For conductor cross-section of 1.5 mm <sup>2</sup> : 13 A For conductor cross-section of 2.5 mm <sup>2</sup> : 17 A For conductor cross-section of 4 mm <sup>2</sup> : 24 A For conductor cross-section of 6 mm <sup>2</sup> : 32 A
Permissible rated operational current with 6 loaded terminals	For conductor cross-section of 1.5 mm <sup>2</sup> : 14 A For conductor cross-section of 2.5 mm <sup>2</sup> : 18 A For conductor cross-section of 4 mm <sup>2</sup> : 25 A For conductor cross-section of 6 mm <sup>2</sup> : 33 A

8118/121-805 Art. No. 133114

### Electrical Data

Permissible rated operational current with 5 loaded terminals	For conductor cross-section of 1.5 mm <sup>2</sup> : 14 A For conductor cross-section of 2.5 mm <sup>2</sup> : 20 A For conductor cross-section of 4 mm <sup>2</sup> : 25 A For conductor cross-section of 6 mm <sup>2</sup> : 35 A
Permissible rated operational current with ≤ 4 loaded terminals	For conductor cross-section of 1.5 mm <sup>2</sup> : 16 A For conductor cross-section of 2.5 mm <sup>2</sup> : 20 A For conductor cross-section of 4 mm <sup>2</sup> : 25 A For conductor cross-section of 6 mm <sup>2</sup> : 35 A

### Ambient Conditions

Ambient temperature	-60 °C ... +40 °C (T6) -60 °C ... +55 °C (T5)
Ambient temperature	-76 °F ... +104 °F (T6) -76 °F ... +131 °F (T5)

### Mechanical Data

IP degree of protection (IEC 60529)	IP66
Enclosure material	Polyester resin, Glass fibre reinforced
Enclosure colour	Dark grey
Flammability according to	IEC/EN 60695 UL 94 ASTM D635
Silicone-free	No
Permissible number of conductors per clamping unit, solid	Mantle terminal, M8.5 x 1 Conductor cross-section 1.5 mm <sup>2</sup> : Number of conductors min. 2, max. 7 Conductor cross-section 2.5 mm <sup>2</sup> : Number of conductors min. 2, max. 5 Conductor cross-section 4 mm <sup>2</sup> : Number of conductors min. 2, max. 3 Conductor cross-section 6 mm <sup>2</sup> : Number of conductors min. 2, max. 2
Permissible number of conductors per clamping unit, finely stranded prepared, core end sleeve crimped	Mantle terminal M8.5 x 1 Conductor cross-section 1.5 mm <sup>2</sup> : Number of conductors min. 2, max. 5 Conductor cross-section 2.5 mm <sup>2</sup> : Number of conductors min. 2, max. 3 Conductor cross-section 4 mm <sup>2</sup> : Number of conductors min. 2, max. 5
Permissible number of conductors per clamping unit, finely stranded unprepared	Mantle terminal, M8.5 x 1 Conductor cross-section 1.5 mm <sup>2</sup> : Number of conductors min. 2, max. 5 Conductor cross-section 2.5 mm <sup>2</sup> : Number of conductors min. 2, max. 3 Conductor cross-section 4 mm <sup>2</sup> : Number of conductors min. 2, max. 5
Permissible number of conductors per clamping unit note	All conductors of a terminal must have the same cross section and be made of the same material.
Cover	Screw-on cover
Cover fixing type	M4 stainless steel screws, With captive screws
Width	115 mm
Width, inches	4.53 in
Height	115 mm
Height in inches	4.53 in
Depth	64 mm
Depth in inches	2.52 in
Packaging unit	1
Weight	570 g
Weight	1.26 lb

### Mounting / Installation

Tightening torque of cover screw 1	1.4 Nm
------------------------------------	--------

8118/121-805 Art. No. 133114

### Mounting / Installation

Tightening torque of cover screw 1 lbf in 12.4 lbf in

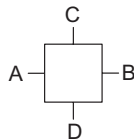
### Components

Entry 1	3 x 8161/7-M25-1707-LT (Provided separately)
Entry 1 type	Polyamide cable gland, black
Entry 1	M25 x 1.5
Entry 1 clamping range	7 – 17 mm
Entry 1 clamping range, inch	0.28 – 0.67 in
Metal entry possible 1	No
Entry 2	1 x 8290/3-M25 (Provided separately)
Entry 2 type	Polyamide stopping plug
Entry 2	M25 x 1.5
Metal entry possible 2	No
Entries installation options/side	Size 2: 4x M25 (A+B+C+D)
Type of terminals 1	8 x Mantle terminal 6 mm <sup>2</sup>

### Technical Drawings – Subject to Alterations

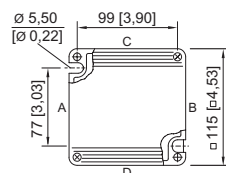
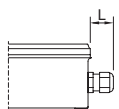
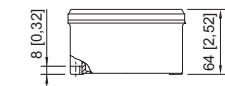


Eight terminals



"—" = marking for mounting options

### Dimensional Drawings (All Dimensions in mm [inches]) – Subject to Alterations



Length L  
Projection dimension for cable gland of Series 8161:  
For M20: 25 to 31 [0.98 to 1.22]  
For M25: 27 to 33 [1.06 to 1.3]  
For M32: 32 to 39 [1.26 to 1.54]  
Projection dimension for cable gland with strain relief  
of Series HSK-K-MZ  
For M25: 41 [1.61]

8118/2.  
Enclosure SZ 2

### Accessories

#### Plastic cable gland




8161/7-M25-1710-LT, Ex e  
Plastic, M25 x 1.5, cable outer diameter 10 to 17 mm  
Lot size 50 pieces

Art. No.

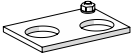
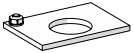

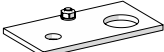
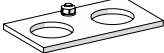

239205

8118/121-805 Art. No. 133114

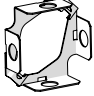
### Stopping plug

		Art. No.
	8290/3-M25 Plastic, M25 x 1.5 Lot size 100 piece	285774

### Brass plate with thread

		Art. No.
	8118 SZ 2, plate 56 x 40 mm [2.2 x 1.57 inch] 2 x M20 x 1.5 with M4 PE connection (right) For installation in enclosure SZ 2 and SZ 3	244072
	8118 SZ 2, plate 56 x 40 mm [2.2 x 1.57 inch] 1 x M25 x 1.5 with M4 PE connection (left) For installation in enclosure SZ 2 and SZ 3	211341
	8118 SZ 3, plate 74 x 40 mm [2.91 x 1.57 inch] 2 x M20 x 1.5 with M4 PE connection (centre) For installation in enclosure SZ 2 and SZ 3	168915
	8118 SZ 3/B, plate 74 x 40 mm [2.91 x 1.57 inch] 2 x M20 x 1.5 with M4 PE connection (centre) For installation in enclosure SZ 2 and SZ 3	244075
	8118 SZ 3, plate 74 x 40 mm [2.91 x 1.57 inch] 1 x M20 x 1.5 + 1 x M10 with M4 PE connection (centre) For installation in enclosure SZ 2 and SZ 3	211342
	8118 SZ 3, plate 74 x 40 mm [2.91 x 1.57 inch] 2 x M25 x 1.5 with M4 PE connection (centre) For installation in enclosure SZ 2 and SZ 3	168916
	8118 SZ 3, plate 74 x 40 mm [2.91 x 1.57 inch] 1 x M25 x 1.5 + 1 x M10 with M4 PE connection (centre) For installation in enclosure SZ 2 and SZ 3	211343

### Spare Parts

Angle		Art. No.
	Bracket 8118 SZ 2, for junction boxes, 4 x M25 For installation in enclosure SZ 2	202959

We reserve the right to make alterations to the technical data, dimensions, weights, designs and products available without notice. The illustrations cannot be considered binding.