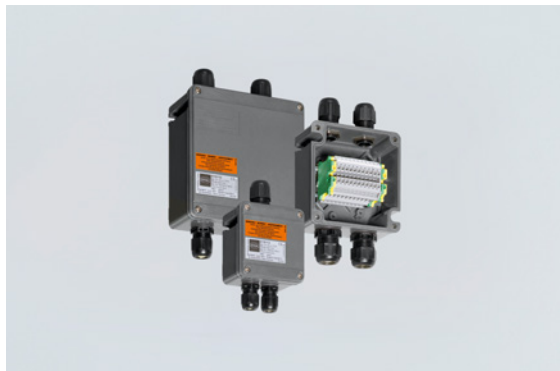


Installation equipment

Ex e terminal box with earth plate



8118/122-305-GB Art. No. 133123



- Compact, impact-resistant enclosure, also available in versions with integrated metal bracket for optimised mounting of cable glands
- Customer-specific equipping with terminals, cable glands and miniature fuses
- IP66 degree of protection

MY R. STAHL 8118B



R. STAHL Series 8118 terminal boxes are equipped, in accordance with customer specifications, with various terminal blocks and cable glands made from plastic or metal. If required, they are also equipped with miniature fuses. They are available in 3 design sizes and are made from glass fibre reinforced polyester resin.

Technical Data

Explosion Protection

Area of application	IECEX European Union (ATEX)
Application range (zones)	1, 2, 21, 22
IECEX gas certificate	IECEX PTB 06.0026
IECEX gas explosion protection	Ex eb IIC T5 / T4 Gb
IECEX dust certificate	IECEX PTB 06.0026
IECEX dust explosion protection	Ex tb IIIC T95 °C / T130 °C Db
ATEX gas certificate	PTB 99 ATEX 3103
ATEX gas explosion protection	⊕ II 2 G Ex eb IIC T5 / T4 Gb
ATEX dust certificate	PTB 99 ATEX 3103
ATEX dust explosion protection	⊕ II 2 D Ex tb IIIC T95 °C / T130 °C Db
Certificates	ATEX (PTB), Brazil (ULB), China (NEPSI), IECEX (PTB), India (PESO), Korea (KTL)
Ship approval	DNV
Declaration of conformity	China (CCC)
Explosion protection note	For product label, see area of application.

Electrical Data

Rated operational voltage AC	690 V
Max. number of conductors for conductor cross-section 1.5 mm ²	At 3 A: 26 ^{*)} At 6 A: 26 ^{*)} At 10 A: 26 ^{*)} At 16 A: 6 ^{*)}
Max. number of conductors for conductor cross-section 2.5 mm ²	At 3 A: Any At 6 A: 26 ^{*)} At 10 A: 26 ^{*)} At 16 A: 14 ^{*)} At 20 A: 6 ^{*)}

Installation equipment

Ex e terminal box with earth plate



8118/122-305-GB Art. No. 133123

Electrical Data

Max. number of conductors for conductor cross-section 4 mm ²	At 3 A: Any At 6 A: Any At 10 A: 22 ^{*)} At 16 A: 22 ^{*)} At 20 A: 22 ^{*)} At 25 A: 8 ^{*)}
Max. number of conductors for conductor cross-section 6 mm ²	At 3 A: Any At 6 A: Any At 10 A: Any At 16 A: 20 ^{*)} At 20 A: 20 ^{*)} At 25 A: 20 ^{*)} At 35 A: 4 ^{*)}
Max. number of conductors note	Each inserted conductor and each internal connection conductor counts as a conductor. Jumpers and protective conductors do not count. ^{*)} When using these values, simultaneity factors or load factors must be taken into account according to IEC 61439. A mixed assembly with electrical circuits of different cross sections and currents is possible with proportional utilisation of the different tables of values.

Ambient Conditions

Ambient temperature	-50 °C ... +55 °C (T5) -50 °C ... +55 °C (T4)
Ambient temperature	-50°F ... +131°F (T5) -50°F ... +131°F (T4)

Mechanical Data

IP degree of protection (IEC 60529)	IP66
Enclosure material	Polyester resin, Glass fibre reinforced
Enclosure colour	Dark grey
Flammability according to	IEC/EN 60695 UL 94 ASTM D635
Silicone-free	No
Cover	Screw-on cover
Cover fixing type	M4 stainless steel screws, With captive screws
Width	115 mm
Width, inches	4.53 in
Height	115 mm
Height in inches	4.53 in
Depth	64 mm
Depth in inches	2.52 in
Packaging unit	1
Weight	720 g
Weight	1.59 lb

Mounting / Installation

Tightening torque of cover screw 1	1.4 Nm
Tightening torque of cover screw 1 lbf in	12.4 lbf in

Components

Entry 1	2 x 8290/3-M25
Entry 1 type	Polyamide stopping plug

Installation equipment

Ex e terminal box with earth plate

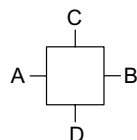


8118/122-305-GB Art. No. 133123

Components

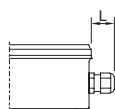
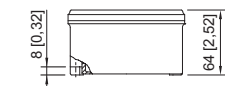
Entry 1	M25 x 1.5
Metal entry possible 1	Yes
Entry 2	2 x Through hole without cable entry
Entry 2	Ø 25 mm
Metal entry possible 2	Yes
Entries installation options/side	Size 2: 4x M25 (A+B+C+D)
Terminal rail	35 x 50 mm (1x)
Terminal rail	1,38 x 1,97 " (1x)
Type of terminals 1	6 x Weidmüller WDU 2.5 2-conductor, 2.5 mm², beige
Type of terminals PE 1	2 x Weidmüller WPE 4 2-conductor, 4 mm², green-yellow
	For connection cross-sections, see the manufacturer's data sheet

Technical Drawings – Subject to Alterations



"—" = marking for mounting options

Dimensional Drawings (All Dimensions in mm [inches]) – Subject to Alterations



Length L

Projection dimension for cable gland of Series 8161:

For M20: 25 to 31 [0.98 to 1.22]

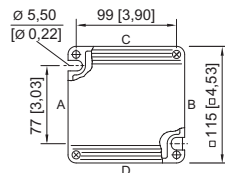
For M25: 27 to 33 [1.06 to 1.3]

For M32: 32 to 39 [1.26 to 1.54]

Projection dimension for cable gland with strain relief

of Series HSK-K-MZ

For M25: 41 [1.61]



8118/2.
Enclosure SZ 2

Accessories

Brass plate with thread

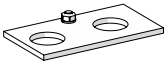
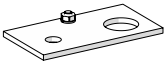
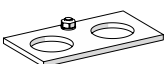

		Art. No.
	8118 SZ 1, plate 37 x 30 mm [1.46 x 1.18 inch] 1 x M20 x 1.5 with M4 PE connection (left) Can be installed in enclosures of SZ 1, SZ 2 and SZ 3	168913
	8118 SZ 1, plate 37 x 30 mm [1.46 x 1.18 inch] 1 x M20 x 1.5 with M4 PE connection (right) Can be installed in enclosures of SZ 1, SZ 2 and SZ 3	168914
	8118 SZ 2, plate 56 x 40 mm [2.2 x 1.57 inch] 2 x M20 x 1.5 with M4 PE connection (right) For installation in enclosure SZ 2 and SZ 3	244072
	8118 SZ 2, plate 56 x 40 mm [2.2 x 1.57 inch] 1 x M25 x 1.5 with M4 PE connection (left) For installation in enclosure SZ 2 and SZ 3	211341

Installation equipment

Ex e terminal box with earth plate



8118/122-305-GB Art. No. 133123

	8118 SZ 3, plate 74 x 40 mm [2.91 x 1.57 inch] 2 x M20 x 1.5 with M4 PE connection (centre) For installation in enclosure SZ 2 and SZ 3	168915
	8118 SZ 3/B, plate 74 x 40 mm [2.91 x 1.57 inch] 2 x M20 x 1.5 with M4 PE connection (centre) For installation in enclosure SZ 2 and SZ 3	244075
	8118 SZ 3, plate 74 x 40 mm [2.91 x 1.57 inch] 1 x M20 x 1.5 + 1 x M10 with M4 PE connection (centre) For installation in enclosure SZ 2 and SZ 3	211342
	8118 SZ 3, plate 74 x 40 mm [2.91 x 1.57 inch] 2 x M25 x 1.5 with M4 PE connection (centre) For installation in enclosure SZ 2 and SZ 3	168916
	8118 SZ 3, plate 74 x 40 mm [2.91 x 1.57 inch] 1 x M25 x 1.5 + 1 x M10 with M4 PE connection (centre) For installation in enclosure SZ 2 and SZ 3	211343

We reserve the right to make alterations to the technical data, dimensions, weights, designs and products available without notice. The illustrations cannot be considered binding.