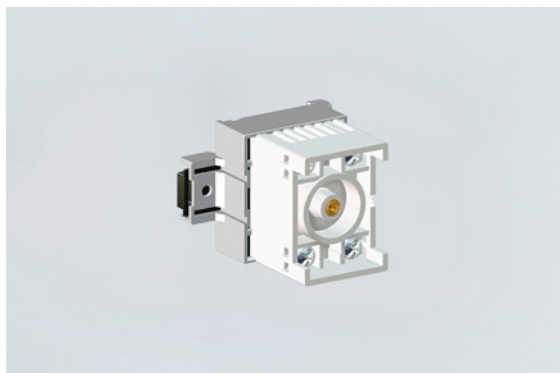


8208/14-06-0012 Art. No. 140672



- Flameproof relay module
- Potential-free switching contact
- Universally usable for a range of control tasks
- Wide service temperature range
- Four screw terminals each with two clamping units with increased safety (Ex e)
- For installation in an Ex e enclosure on a toothed mounting rail
- International certificates available

MY R. STAHL 8208C



The flameproof relay module in the 8208 universal enclosure is versatile enough to be used for various different control tasks in hazardous areas. This compact device is designed for installation in enclosures with increased safety (Ex e) type of protection. It is mounted on a toothed mounting rail. Four Ex e screw terminals each with two clamping units are available for the electrical connection.

### Technical Data

#### Explosion Protection

|                                |  |
|--------------------------------|--|
| Application range (zones)      | 1, 2   |
| IECEX gas certificate          | IECEX PTB 06.0032 U  |
| IECEX gas certificate          | IECEX PTB 06.0032 U  |
| IECEX gas explosion protection | Ex db eb IIC T6 Gb   |
| ATEX gas certificate           | PTB 01 ATEX 1066 U   |
| ATEX gas certificate           | PTB 01 ATEX 1066 U   |
| ATEX gas explosion protection  | Ex II 2 G Ex db eb IIC T6 Gb   |
| PESO gas certificate           | PESO P148651   |
| PESO gas explosion protection  | Ex db eb IIC T6 Gb   |
| Inmetro gas certificate        | ULBR140223U  |
| Certificates                   | ATEX (PTB), Brazil (ULB), China (CQST), IECEX (PTB), SIL (exida)         |
| Explosion protection note      | Product label may vary. Series devices are labelled with ATEX and IECEX. |

#### Electrical Data

|                              |               |
|------------------------------|---------------|
| Rated operational voltage AC | 230 V         |
| Rated actuating voltage      | 230 V AC      |
| Switching capacity           | 5 A/250 V/AC1 |
| Frequency Hz (for AC)        | 50            |
| Type of voltage              | AC            |

#### Ambient Conditions

|                     |                        |
|---------------------|------------------------|
| Ambient temperature | -40 °C ... 60 °C       |
| Note                | see "Max. power" table |

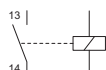
8208/14-06-0012 Art. No. 140672

|            |  |                                      |                                      |                                      |
|------------|--|--------------------------------------|--------------------------------------|--------------------------------------|
| Max. power | <b>Maximum internal heat distribution</b><br>(connection with 1.5 mm <sup>2</sup> conductor cross-section and maximum 5 A) |                                      |                                      |                                      |
|            | Ambient temperature  |                                      | Ambient temperature                  |                                      |
|            | max. 40 °C   |                                      | max. 60 °C                           |                                      |
|            | T <sub>surface</sub><br>= max. 80 °C   | T <sub>surface</sub><br>= max. 95 °C | T <sub>surface</sub><br>= max. 80 °C | T <sub>surface</sub><br>= max. 95 °C |
|            | 3.0 W  | 4.75 W                               | 1.5 W                                | 2.0 W                                |

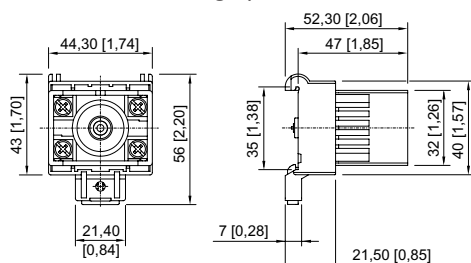
### Mechanical Data

|  |                           |
|--|---------------------------|
| Enclosure material   | Polyamide                 |
| Silicone-free  | Yes                       |
| Connection cross-section                                       | 2.5 mm <sup>2</sup>       |
| Max. connection cross section, solid                           | 2,5 mm <sup>2</sup>       |
| Max. connection cross-section, finely stranded                 | 2,5 mm <sup>2</sup>       |
| Solid connection cross section                                 | 1.5 – 2.5 mm <sup>2</sup> |
| Finely stranded connection cross section                       | 1.5 – 2.5 mm <sup>2</sup> |
| Connection cross-section, finely stranded with core end sleeve | 1.5 – 2.5 mm <sup>2</sup> |
| Number of relays   | 1                         |
| Number of relay contacts                                       | 1 NO                      |
| Type of connection cable                                       | Finely stranded<br>Solid  |
| Width  | 44 mm                     |
| Height   | 56 mm                     |
| Depth  | 52.5 mm                   |
| Weight   | 90 g                      |
| Weight   | 0.2 lb                    |

### Technical Drawings – Subject to Alterations



### Dimensional Drawings (All Dimensions in mm [inches]) – Subject to Alterations



We reserve the right to make alterations to the technical data, dimensions, weights, designs and products available without notice. The illustrations cannot be considered binding.