

8150/5-0176-0176-091-3311 Art. No. 206544



- Ex e control boxes made of stainless steel that can be individually equipped
- The cover is either equipped with a hinge (large opening angle, 130°) and cam lock or with a screw-on cover
- Numerous standard sizes in stock

### MY R. STAHL 8150B



R. STAHL Series 8150 control and distribution boxes are made of brush-finished stainless steel (1.4301, AISI 304 or 1.4404, AISI 316L) and are extremely robust: High-quality seal materials make them suitable for an extended temperature range, while a circumferential protection channel prevents water ingress. A flange plate simplifies mounting.

## Technical Data

### Explosion Protection

Area of application	European Union (ATEX) IECEX
Application range (zones)	1, 2, 21, 22
IECEX gas certificate	IECEX PTB 09.0049
IECEX gas explosion protection	Ex eb IIC T6 ... T4 Gb
IECEX dust certificate	IECEX PTB 09.0049
IECEX dust explosion protection	Ex tb IIIC T80 °C ... T130 °C Db
ATEX gas certificate	PTB 09 ATEX 1109
ATEX gas explosion protection	⊕ II 2 G Ex eb IIC T6 ... T4 Gb
ATEX dust certificate	PTB 09 ATEX 1109
ATEX dust explosion protection	⊕ II 2 D Ex tb IIIC T80 °C ... T130 °C Db
Certificates	ATEX (PTB), Brazil (ULB), Canada (FM), Canada (UL), China (NEPSI), IECEX (PTB), India (PESO), Korea (KGS), Taiwan (ITRI), USA (FM), USA (UL)
Notes	Product label may vary. Series devices are labelled with ATEX and IECEX.

### Electrical Data

Rated operational voltage AC	0 ... 1000 V
Rated operational current	0 – 630 A
Notes	Depending on the built-in components.

### Ambient Conditions

Ambient temperature	-60 °C ... +40 °C (T6) (T80 °C) -60 °C ... +55 °C (T5) (T95 °C) -60 °C ... +70 °C (T4) (T130 °C)
Ambient temperature	-76 °F ... +104 °F (T6) (T80 °C) -76 °F ... +131 °F (T5) (T95 °C) -76 °F ... +158 °F (T4) (T130 °C)

### Mechanical Data

IP degree of protection (IEC 60529)	IP66
Enclosure material	Stainless steel 1.4404, (AISI 316L), brush finished

8150/5-0176-0176-091-3311 Art. No. 206544

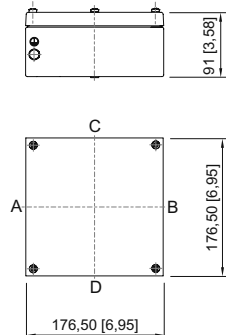
### Mechanical Data

Silicone-free	No
Cover fixing type	With captive screws
Cover thickness	2 mm
Cover thickness in inches	0.079 in
Wall thickness	1.5 mm
Wall thickness in inches	0.059 in
Total depth H	106 mm
Width	176.5 mm
Width, inches	6.945 in
Height	176.5 mm
Height in inches	6.945 in
Depth	91 mm
Depth in inches	3.583 in
Weight	2.87 kg
Weight	6.32 lb

### Components

Flange and plates	Without flange
Terminal rail	35 x 133 mm (1x)

### Dimensional Drawings (All Dimensions in mm [inches]) – Subject to Alterations



8150/-0176-0176-091-..1.

We reserve the right to make alterations to the technical data, dimensions, weights, designs and products available without notice. The illustrations cannot be considered binding.