



- Six basic enclosure sizes, optional inspection windows, direct and indirect cable entry possible
- International certification, wide temperature range, seawater-resistant light-metal enclosure
- Suitable series 8146/8150 connection-chamber enclosures possible

### MY R. STAHL 8265A



R. STAHL series 8265 Ex d enclosures are ideal for motor control units, control boxes and terminal boxes. We equip these with various components, including sparking equipment, according to customer requirements. The cable entry can be direct or indirect. The large cover opening makes commissioning and maintenance easier. Single enclosures are ideal as components in Ex e control systems. Optional, large inspection window possible.

## Technical Data

### Explosion Protection

Application range (zones)	1, 2, 21, 22
IECEX gas certificate	IECEX PTB 07.0027 U
IECEX gas explosion protection	Ex db eb IIC Gb
IECEX dust certificate	IECEX PTB 07.0027 U
IECEX dust explosion protection	Ex tb IIIC Db
ATEX gas certificate	PTB 06 ATEX 1023 U
ATEX gas explosion protection	Ex II 2 G Ex db eb IIC Gb
ATEX dust certificate	PTB 06 ATEX 1023 U
ATEX dust explosion protection	Ex II 2 D Ex tb IIIC Db
Certificates	ATEX (PTB), Brazil (ULB), China (NEPSI), IECEX (PTB), Taiwan (ITRI)
Declaration of Conformity	Certificate of conformity (ATEX), China (CCC)

### Ambient Conditions

Ambient temperature	-50 °C ... +60 °C
Ambient temperature	-58 °F ... +140 °F

### Mechanical Data

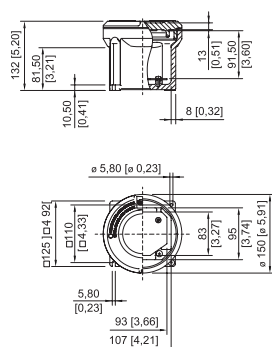
Degree of protection (IP)	IP54
Note on degree of protection	IP66 with O-ring silicone -60 °C ... +60 °C
Enclosure material	Aluminium, copper-free, Seawater-resistant
Enclosure colour	without
Material note	Where there will be direct contact with seawater, a coating is recommended.
Clamping range max.	95 mm <sup>2</sup>
Cover	Closed
Design	Without entry
Width	125 mm
Width, inches	4.92 in
Height	132 mm

8265/01-0000 Art. No. 211112

**Mechanical Data**

Height in inches	5.2 in
Length	125 mm
Length in inches	4.92 in
Diameter	150 mm
Diameter inch	5.91 in
Enclosure size	1
Weight	2.75 kg
Weight	6.06 lb

**Dimensional Drawings (All Dimensions in mm [inches]) – Subject to Alterations**



Size 1 enclosure without sight glass

**Accessories**

Mounting rail		Art. No.
	TS15 length: 90 mm [3.54 inch], diagonal for size 1 enclosure	212338
	TS35 length: 90 mm [3.54 inch], diagonal for size 1 enclosure	212339

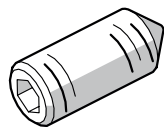
Cover without sight glass		Art. No.
	Enclosure: 8265/.1-0000	208861

Mounting rail		Art. No.
	TS35 length: 80 mm [3.15 inch] for size 1 enclosure	212424
	TS15 length: 80 mm [3.15 inch] for size 1 enclosure	212425

8265/01-0000 Art. No. 211112

### Threaded pin

Art. No.

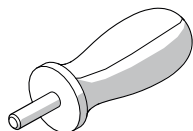


M5x16-A2 with hexagon socket and pointed tip

110216

### Box spanner

Art. No.



for opening a size 1, 2, 3, 4 enclosure cover  
two box spanners are required

142059

## Spare Parts

### Mounting plate

Art. No.

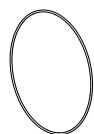


for size 1 enclosure  
M5 x 8 screws are not included in the delivery

208862

### O-ring

Art. No.



Silicone, for size 1 enclosure

305498

We reserve the right to make alterations to the technical data, dimensions, weights, designs and products available without notice. The illustrations cannot be considered binding.