

# Signalling devices



Visual signalling device LED continuous beacon

In flameproof enclosure Increased safety

6161/3-70-221-0-1 Art. No. 219846



- Lamp: Flashing beacon – XENON (5 J)/continuous beacon – LED
- Type of protection: Ex d with Ex e connection chamber
- Class: IP66 (IEC 60529)
- Robust aluminium enclosure (powder-coated)
- Six lens colours can be ordered

MY R. STAHL 6161A



The **6161 product series** can be used as a signal lamp or warning lamp in areas with an explosive gas atmosphere or explosive dust atmosphere.

## Technical Data

### Explosion Protection

Area of application	IECEX European Union (ATEX)
Application range (zones)	1, 2, 21, 22
IECEX gas certificate	IECEX EPS 20.0004X
IECEX gas explosion protection	Ex db eb IIC T6 Gb
IECEX dust certificate	IECEX EPS 20.0004X
IECEX dust explosion protection	Ex tb IIIC T65 °C / T75 °C Db
ATEX gas certificate	EPS 20 ATEX 1 008 X
ATEX gas explosion protection	⊕ II 2 G Ex db eb IIC T6 Gb
ATEX dust certificate	EPS 20 ATEX 1 008 X
ATEX dust explosion protection	⊕ II 2 D Ex tb IIIC T65 °C / T75 °C Db
Certificates	ATEX (BVIS), IECEX (BVIS)
Declaration of conformity	ATEX (EUK)

### Electrical Data

Rated operational voltage AC	24 V
Rated operational voltage DC	24 V
Back-up fuse	4 AT

### Lighting Data

Lamp	LED
------	-----

### Ambient Conditions

Ambient temperature	-40 °C ... +40 °C (T6) -40 °C ... +50 °C
---------------------	---

### Mechanical Data

Degree of protection (IP)	IP66
Degree of protection (IP) (IEC 60529)	IP66
Enclosure material	Aluminium, powder-coated, Seawater-resistant
Enclosure colour	Yellow / black, powder-coated
Sealing material	NBR O-ring seal

# Signalling devices



Visual signalling device LED continuous beacon

In flameproof enclosure Increased safety

6161/3-70-221-0-1 Art. No. 219846

## Mechanical Data

Material dome	Polycarbonate (Lexan) Prismatic
Wire guard material	Stainless steel
Terminal marking	PE + N + L1
Max. solid connection terminals	4 mm <sup>2</sup>
Max. finely stranded connection terminals	2.5 mm <sup>2</sup>
Clamping range	4 ... 13 mm
Type of connection cable	Solid Finely stranded
Width	76 mm
Height	260 mm
Length	91 mm
Lens colour	Clear
Weight	1.4 kg
Weight	3.09 lb

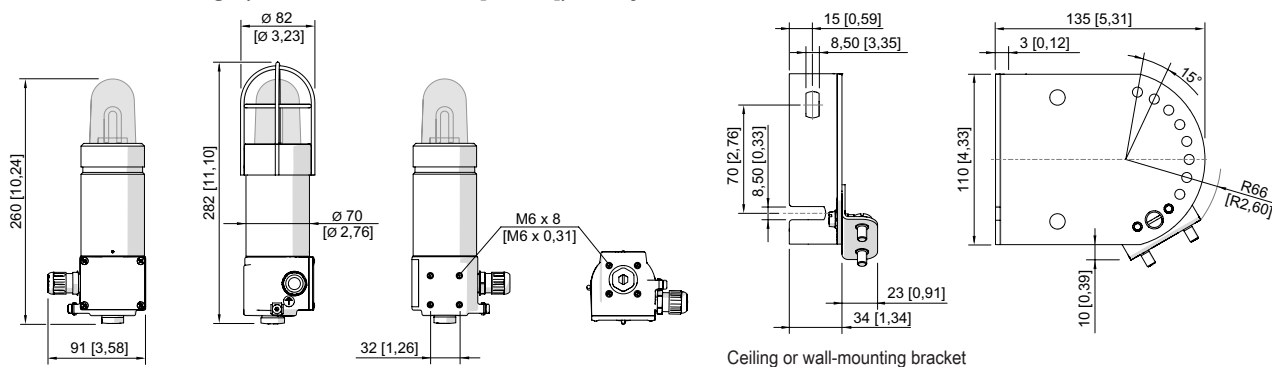
## Mounting / Installation

Connection type	Screw terminals, 3-pin
Mounting part material	Stainless steel
Note about mounting	Can be ordered as accessories

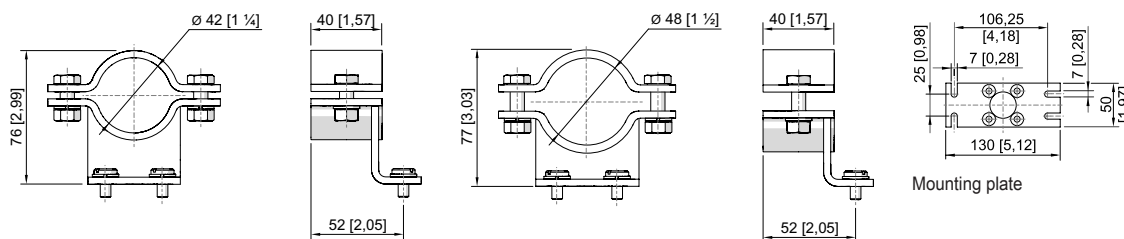
## Components

Drilled holes	2 x M20
Cable glands and entries	1 x M20 Ø 4 ... 13 mm
Material cable gland	Polyamide, black
Stopping plugs	1 x M20 x 1.5
Stopping plug material	Polyamide, black
Wire guard	Can be ordered as accessories

## Dimensional Drawings (All Dimensions in mm [inches]) – Subject to Alterations



Flashing beacon 6161



Pipe clamp

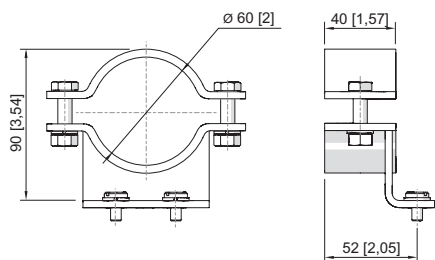
Pipe clamp Ø48

## Signalling devices

Visual signalling device LED continuous beacon

In flameproof enclosure Increased safety

6161/3-70-221-0-1 Art. No. 219846



Pipe clamp Ø60

## Accessories

### Plastic cable gland



8161/7-M20-1304, Ex e  
Plastic, M20 x 1.5, cable outer diameter 4 to 13 mm  
Lot size 50 pieces

Art. No.

239156

### Stopping plug



8290/3-M20  
Plastic, M20 x 1.5  
Lot size 1 piece

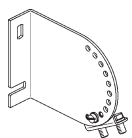
8290/3-M20  
Plastic, M20 x 1.5  
Lot size 100 pieces

Art. No.

143522

285773

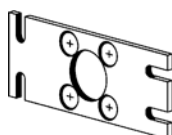
### Mounting accessories



Mounting bracket for wall or floor mounting, stainless steel, incl. mounting screws

Art. No.

120826



Mounting plate for wall or floor mounting (stainless steel), incl. mounting screws

120821



Pipe clamp, R 1 1/4"

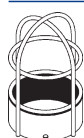
120812

Pipe clamp, R 1 1/2"

120819

Pipe clamp, R 2"

120823



Protective cage, stainless steel

307544

We reserve the right to make alterations to the technical data, dimensions, weights, designs and products available without notice. The illustrations cannot be considered binding.