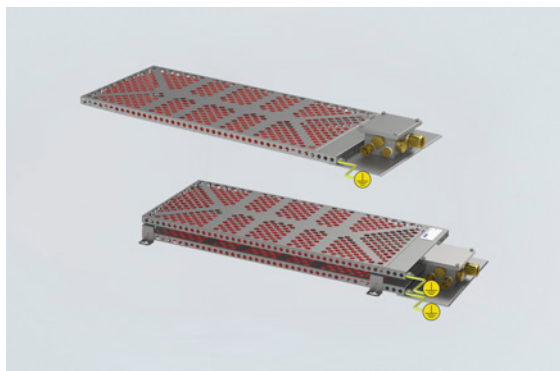


# TRANBERG Solutions

## Enclosure heater With junction box And temperature control device

TEF92072402 Art. No. 220176



- Low profile, easy to fit inside cabinets
- Self-regulating heating element. Prevents overheating
- Rugged AISI 316L, acid steel construction
- Ambient air thermostat, integrated in heater junction box
- Low maintenance
- For use inside equipment enclosures and cabinets to prevent condensation and provide climatic control
- Frost protection

MY R. STAHL T9207C



Globally approved Ex e, self regulating enclosure heater. AISI 316L acid resistant steel enclosure and junction box. Junction box for electrical connections. Delivered with ambient air thermostat, +5 °C or +15 °C and power output from 100 W up to 600 W at 0 °C ambient, still air.

### Technical Data

#### Explosion Protection

|                                |                          |
|--------------------------------|--------------------------|
| Application range (zones)      | 1, 2                     |
| IECEX gas certificate          | IECEX NEM 11.0005X       |
| IECEX gas explosion protection | Ex e IIC T3 Gb           |
| ATEX gas certificate           | NEMKO 11ATEX1098X        |
| ATEX gas explosion protection  | Ex II 2 G Ex e IIC T3 Gb |

#### Electrical Data

|                 |            |
|-----------------|------------|
| Power           | 200 W      |
| Frequency range | 50 – 60 Hz |

#### Ambient Conditions

|                               |                          |
|-------------------------------|--------------------------|
| Ambient temperature           | -50 °C ... +50 °C (live) |
| Storage temperature           | -50 °C ... +80 °C        |
| Opening temperature OFF       | +5 °C                    |
| Opening temperature tolerance | +/- 5°C                  |

#### Mechanical Data

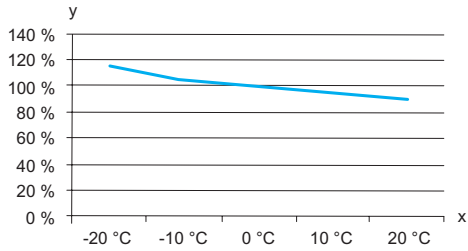
|  |                        |
|--|------------------------|
| Degree of protection (IP)                      | IP66                   |
| Enclosure material                             | Stainless steel 1.4404 |
| Max. connection cross section, solid           | 4 mm <sup>2</sup>      |
| Max. connection cross-section, finely stranded | 2,5 mm <sup>2</sup>    |
| Cable length                                   | 0 m                    |
| Dimension A                                    | 245 mm                 |
| Dimension B                                    | 684 mm                 |
| Dimension C                                    | 30 mm                  |
| Dimension D                                    | 80 mm                  |
| Dimension E                                    | 440 mm                 |
| Dimension F                                    | 200 mm                 |
| Weight   | 10.45 lb               |

## Enclosure heater With junction box And temperature control device TEF92072402 Art. No. 220176

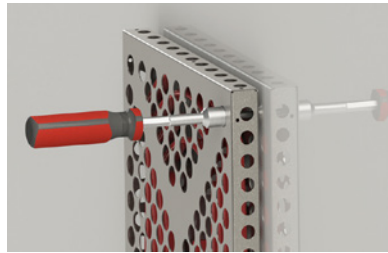
### Components

|                          |               |
|--------------------------|---------------|
| Drilled holes            | 4 x M25       |
| Cable glands and entries | 1 x M25 x 1.5 |
| Stopping plugs           | 3 x M25 x 1.5 |

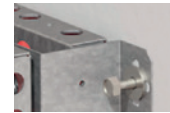
### Technical Drawings – Subject to Alterations



Estimated power output of heater in respect to ambient temperature  
y = Effect %, x = Ambient temperature °C

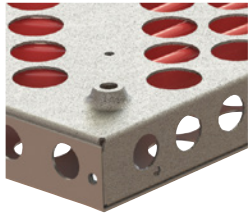


Use a tool to tighten the screws firmly to secure the heater.



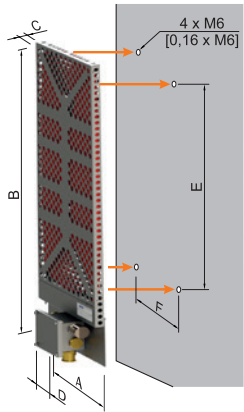
#### Sandwich design

Insert 4 x M6 screws and washers in the mounting brackets as shown. Use a wrench for tightening the screws firmly.

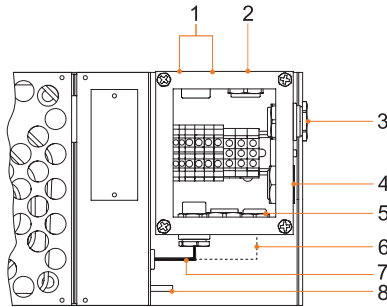


4 x Ø 6 mm mounting holes on the rear side of the heater

### Dimensional Drawings (All Dimensions in mm [inches]) – Subject to Alterations



**Note!** Never install the heater with junction box facing upwards.



- 1 Ambient air thermostat
  - 2 Stopping plug M25
  - 3 Power in M25
  - 4 Breather M25
  - 5 Stopping plug M25
  - 6 <sup>1)</sup> 2x cold lead only (for sandwich design)
  - 7 <sup>1)</sup> Cold lead
  - 8 Earth bolt
- <sup>1)</sup> internal cables from heater plate (installed at TRANBERG Factory)

| Nominal output <sup>1)</sup> | Overall dimensions |      |    |    | Mounting dimensions |     | Weight   |
|------------------------------|--------------------|------|----|----|---------------------|-----|----------|
|                              | A                  | B    | C  | D  | E                   | F   |          |
| 100 W                        | 233                | 430  | 30 | 80 | 190                 | 160 | 2.92 kg  |
| 200 W                        | 245                | 684  | 30 | 80 | 440                 | 200 | 4.74 kg  |
| 300 W                        | 280                | 834  | 30 | 80 | 590                 | 240 | 6.72 kg  |
| 400 W                        | 303                | 684  | 80 | 80 | 440                 | 276 | 6.44 kg  |
| 500 W                        | 360                | 1004 | 30 | 80 | 760                 | 320 | 9.32 kg  |
| 600 W                        | 343                | 834  | 80 | 80 | 590                 | 316 | 11.76 kg |
| 1000 W                       | 424                | 1004 | 80 | 80 | 760                 | 397 | 18.50 kg |

# TRANBERG Solutions

Enclosure heater With junction box  
And temperature control device  
TEF92072402 Art. No. 220176

---



<sup>1)</sup> **Note: Nominal output at still air at 0 °C**

We reserve the right to make alterations to the technical data, dimensions, weights, designs and products available without notice. The illustrations cannot be considered binding.