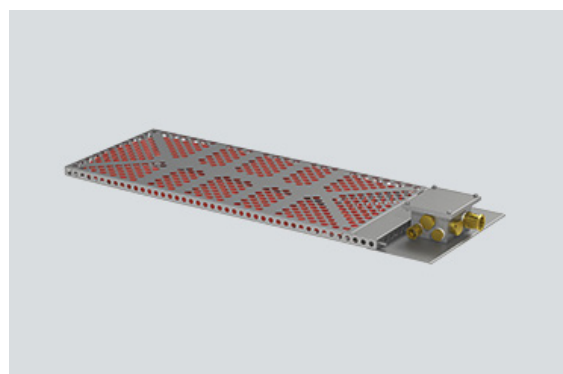


TEF92071002 Art. No. 220183



- Low profile, easy to fit inside cabinets
- Self-regulating heating element. Prevents overheating
- Rugged AISI 316L, acid steel construction
- Low maintenance
- For use inside equipment enclosures and cabinets to prevent condensation and provide climatic control
- Frost protection

MY R. STAHL T9207B



Globally approved Ex e, self regulating enclosure heater. AISI 316L acid resistant steel enclosure and junction box. Junction box for electrical connections. Delivered with power output from 100 W up to 600 W at 0 °C.

## Technical Data

### Explosion Protection

|                                |                          |
|--------------------------------|--------------------------|
| Application range (zones)      | 1, 2                     |
| IECEX gas certificate          | IECEX NEM 11.0005X       |
| IECEX gas explosion protection | Ex e IIC T3 Gb           |
| ATEX gas certificate           | NEMKO 11ATEX1098X        |
| ATEX gas explosion protection  | Ex II 2 G Ex e IIC T3 Gb |

### Electrical Data

|                 |            |
|-----------------|------------|
| Power           | 200 W      |
| Frequency range | 50 – 60 Hz |

### Ambient Conditions

|                     |                          |
|---------------------|--------------------------|
| Ambient temperature | -50 °C ... +50 °C (live) |
| Storage temperature | -50 °C ... +80 °C        |

### Mechanical Data

|  |                        |
|--|------------------------|
| Degree of protection (IP)                      | IP66                   |
| Enclosure material                             | Stainless steel 1.4404 |
| Max. connection cross section, solid           | 4 mm <sup>2</sup>      |
| Max. connection cross-section, finely stranded | 2,5 mm <sup>2</sup>    |
| Cable length                                   | 0 m                    |
| Dimension A                                    | 240 mm                 |
| Dimension B                                    | 684 mm                 |
| Dimension C                                    | 30 mm                  |
| Dimension D                                    | 80 mm                  |
| Dimension E                                    | 440 mm                 |
| Dimension F                                    | 200 mm                 |
| Weight   | 10.45 lb               |

### Components

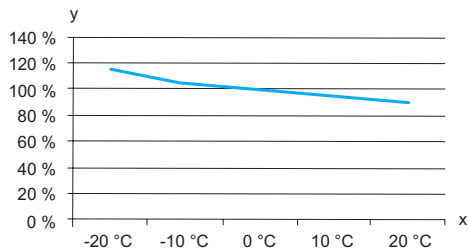
|                          |               |
|--------------------------|---------------|
| Drilled holes            | 4 x M25       |
| Cable glands and entries | 1 x M25 x 1.5 |

TEF92071002 Art. No. 220183

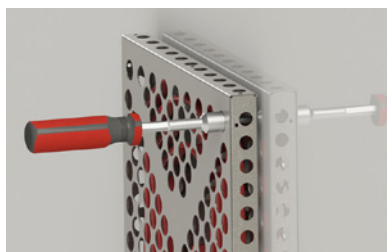
### Components

|                |               |
|----------------|---------------|
| Stopping plugs | 3 x M25 x 1.5 |
|----------------|---------------|

### Technical Drawings – Subject to Alterations



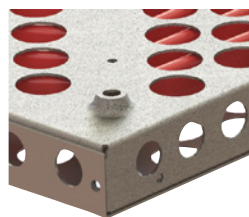
Estimated power output of heater in respect to ambient temperature  
y = Effect %, x = Ambient temperature °C



Use a tool to tighten the screws firmly to secure the heater.

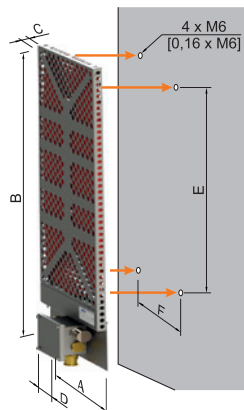


**Sandwich design**  
Insert 4 x M6 screws and washers in the mounting brackets as shown. Use a wrench for tightening the screws firmly.

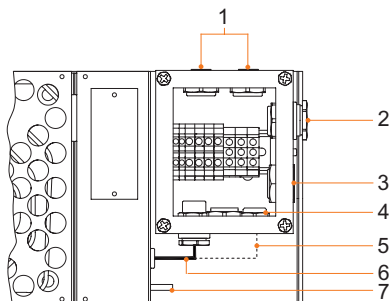


4 x Ø 6 mm mounting holes on the rear side of the heater

### Dimensional Drawings (All Dimensions in mm [inches]) – Subject to Alterations



**Note!** Never install the heater with junction box facing upwards.



- 1 Stopping plug M25
  - 2 Power in M25
  - 3 Breather M25
  - 4 Stopping plug M25
  - 5 <sup>1</sup> 2x cold lead only (for sandwich design)
  - 6 <sup>1</sup> Cold lead
  - 7 Earth bolt M6 x 10
- <sup>1</sup> internal cables from heater plate (installed at TRANBERG Factory)

| Nominal output <sup>1)</sup> | Overall dimensions |      |    |    | Mounting dimensions |     | Weight   |
|------------------------------|--------------------|------|----|----|---------------------|-----|----------|
|                              | A                  | B    | C  | D  | E                   | F   |          |
| 100 W                        | 200                | 430  | 30 | 80 | 190                 | 160 | 2.92 kg  |
| 200 W                        | 240                | 684  | 30 | 80 | 440                 | 200 | 4.74 kg  |
| 300 W                        | 280                | 834  | 30 | 80 | 590                 | 240 | 6.72 kg  |
| 400 W                        | 303                | 684  | 80 | 80 | 440                 | 276 | 6.44 kg  |
| 500 W                        | 360                | 1004 | 30 | 80 | 760                 | 320 | 9.32 kg  |
| 600 W                        | 343                | 834  | 80 | 80 | 590                 | 316 | 11.76 kg |
| 1000 W                       | 424                | 1004 | 80 | 80 | 760                 | 397 | 18.50 kg |

<sup>1)</sup> Note: Nominal output at still air at 0 °C

**TRANBERG Solutions**  
Enclosure heater With junction box



TEF92071002 Art. No. 220183

---

We reserve the right to make alterations to the technical data, dimensions, weights, designs and products available without notice. The illustrations cannot be considered binding.