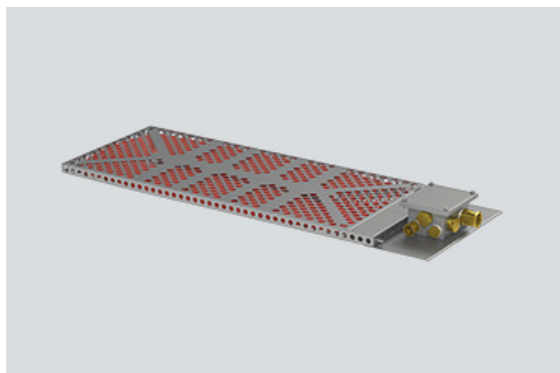


TEF92071005 Art. No. 220186



- Low profile, easy to fit inside cabinets
- Self-regulating heating element. Prevents overheating
- Rugged AISI 316L, acid steel construction
- Low maintenance
- For use inside equipment enclosures and cabinets to prevent condensation and provide climatic control
- Frost protection

MY R. STAHL T9207B



Globally approved Ex e, self regulating enclosure heater. AISI 316L acid resistant steel enclosure and junction box. Junction box for electrical connections. Delivered with power output from 100 W up to 600 W at 0 °C.

## Technical Data

### Explosion Protection

Application range (zones)	1, 2
IECEX gas certificate	IECEX NEM 11.0005X
IECEX gas explosion protection	Ex e IIC T3 Gb
ATEX gas certificate	NEMKO 11ATEX1098X
ATEX gas explosion protection	Ex II 2 G Ex e IIC T3 Gb

### Electrical Data

Power	500 W
Frequency range	50 – 60 Hz

### Ambient Conditions

Ambient temperature	-50 °C ... +50 °C (live)
Storage temperature	-50 °C ... +80 °C

### Mechanical Data

Degree of protection (IP)	IP66
Enclosure material	Stainless steel 1.4404
Max. connection cross section, solid	4 mm <sup>2</sup>
Max. connection cross-section, finely stranded	2,5 mm <sup>2</sup>
Cable length	0 m
Dimension A	360 mm
Dimension B	1004 mm
Dimension C	30 mm
Dimension D	80 mm
Dimension E	760 mm
Dimension F	320 mm
Weight	20.55 lb

### Components

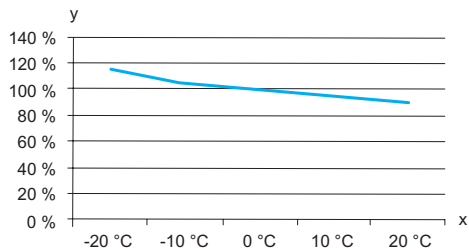
Drilled holes	4 x M25
Cable glands and entries	1 x M25 x 1.5

TEF92071005 Art. No. 220186

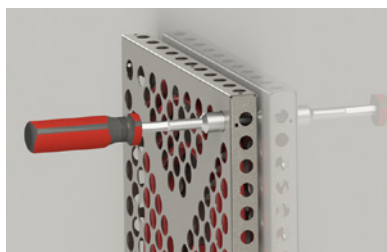
### Components

Stopping plugs	3 x M25 x 1.5
----------------	---------------

### Technical Drawings – Subject to Alterations



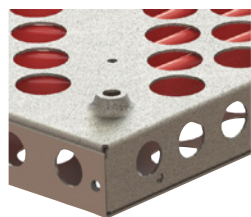
Estimated power output of heater in respect to ambient temperature  
y = Effect %, x = Ambient temperature °C



Use a tool to tighten the screws firmly to secure the heater.

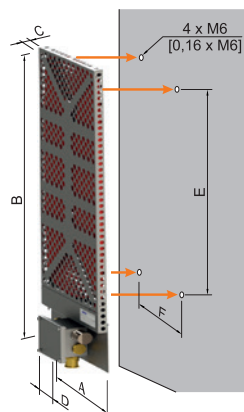


**Sandwich design**  
Insert 4 x M6 screws and washers in the mounting brackets as shown. Use a wrench for tightening the screws firmly.

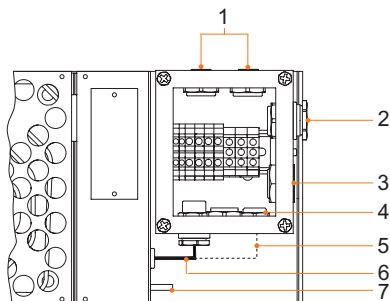


4 x Ø 6 mm mounting holes on the rear side of the heater

### Dimensional Drawings (All Dimensions in mm [inches]) – Subject to Alterations



**Note!** Never install the heater with junction box facing upwards.



- 1 Stopping plug M25
  - 2 Power in M25
  - 3 Breather M25
  - 4 Stopping plug M25
  - 5 <sup>1</sup> 2x cold lead only (for sandwich design)
  - 6 <sup>1</sup> Cold lead
  - 7 Earth bolt M6 x 10
- <sup>1</sup> internal cables from heater plate (installed at TRANBERG Factory)

Nominal output <sup>1)</sup>	Overall dimensions				Mounting dimensions		Weight
	A	B	C	D	E	F	
100 W	200	430	30	80	190	160	2.92 kg
200 W	240	684	30	80	440	200	4.74 kg
300 W	280	834	30	80	590	240	6.72 kg
400 W	303	684	80	80	440	276	6.44 kg
500 W	360	1004	30	80	760	320	9.32 kg
600 W	343	834	80	80	590	316	11.76 kg
1000 W	424	1004	80	80	760	397	18.50 kg

<sup>1)</sup> Note: Nominal output at still air at 0 °C

**TRANBERG Solutions**  
Enclosure heater With junction box



TEF92071005 Art. No. 220186

---

We reserve the right to make alterations to the technical data, dimensions, weights, designs and products available without notice. The illustrations cannot be considered binding.