

8118/112-047-0 Art. No. 224642



- Compact, impact-resistant enclosure, also available in versions with integrated metal bracket for optimised mounting of cable glands
- Customer-specific equipping with terminals, cable glands and miniature fuses
- IP66 degree of protection

### MY R. STAHL 8118B



R. STAHL Series 8118 terminal boxes are equipped, in accordance with customer specifications, with various terminal blocks and cable glands made from plastic or metal. If required, they are also equipped with miniature fuses. They are available in 3 design sizes and are made from glass fibre reinforced polyester resin.

## Technical Data

### Explosion Protection

Area of application	European Union (ATEX) IECEX
Application range (zones)	1, 2, 21, 22
IECEX gas certificate	IECEX PTB 06.0026
IECEX gas explosion protection	Ex eb IIC T6 / T5 Gb
IECEX dust certificate	IECEX PTB 06.0026
IECEX dust explosion protection	Ex tb IIIC T80 °C / T95 °C Db
ATEX gas certificate	PTB 99 ATEX 3103
ATEX gas explosion protection	⊕ II 2 G Ex eb IIC T6 / T5 Gb
ATEX dust certificate	PTB 99 ATEX 3103
ATEX dust explosion protection	⊕ II 2 D Ex tb IIIC T80 °C / T95 °C Db
Certificates	ATEX (PTB), Brazil (ULB), China (NEPSI), IECEX (PTB), India (PESO), Korea (KTL)
Ship approval	DNV
Declaration of conformity	ATEX (EUK), China (CCC)
Explosion protection note	For product label, see area of application.

### Electrical Data

Rated operational voltage AC	690 V
Max. number of conductors for conductor cross-section 1.5 mm <sup>2</sup>	At 3 A: 16 <sup>*)</sup> At 6 A: 16 <sup>*)</sup> At 10 A: 16 <sup>*)</sup> At 16 A: 6 <sup>*)</sup>
Max. number of conductors for conductor cross-section 2.5 mm <sup>2</sup>	At 3 A: Any At 6 A: 12 <sup>*)</sup> At 10 A: 12 <sup>*)</sup> At 16 A: 12 <sup>*)</sup> At 20 A: 6 <sup>*)</sup>

8118/112-047-0 Art. No. 224642

### Electrical Data

Max. number of conductors for conductor cross-section 4 mm <sup>2</sup>	At 3 A: Any At 6 A: Any At 10 A: 12 <sup>*)</sup> At 16 A: 12 <sup>*)</sup> At 20 A: 12 <sup>*)</sup> At 25 A: 8 <sup>*)</sup>
Max. number of conductors note	Each inserted conductor and each internal connection conductor counts as a conductor. Jumpers and protective conductors do not count.  <sup>*)</sup> When using these values, simultaneity factors or load factors must be taken into account according to IEC 61439. A mixed assembly with electrical circuits of different cross sections and currents is possible with proportional utilisation of the different tables of values.

### Ambient Conditions

Ambient temperature	-40 °C ... +40 °C (T6) -40 °C ... +55 °C (T5)
Ambient temperature	-40°F ... +104°F (T6) -40°F ... +131°F (T5)

### Mechanical Data

IP degree of protection (IEC 60529)	IP66
Enclosure material	Polyester resin, Glass fibre reinforced
Enclosure colour	Dark grey
Flammability according to	IEC/EN 60695 UL 94 ASTM D635
Silicone-free	No
Cover	Screw-on cover
Cover fixing type	M4 stainless steel screws, With captive screws
Width	85 mm
Width, inches	3.35 in
Height	85 mm
Height in inches	3.35 in
Depth	55 mm
Depth in inches	2.17 in
Packaging unit	1
Weight	360 g
Weight	0.79 lb

### Mounting / Installation

Tightening torque of cover screw 1	1.4 Nm
Tightening torque of cover screw 1 lbf in	12.4 lbf in

### Components

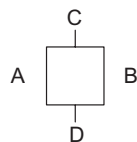
Entry 1	2 x 8161/7-M20-1304 (Provided separately)
Entry 1 type	Polyamide cable gland, black
Entry 1	M20 x 1.5
Entry 1 clamping range	4 – 13 mm
Entry 1 clamping range, inch	0.16 – 0.51 in
Metal entry possible 1	No

8118/112-047-0 Art. No. 224642

### Components

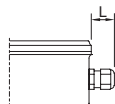
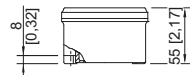
Entry 2	1 x 8290/3-M20 (Provided separately)
Entry 2 type	Polyamide stopping plug
Entry 2	M20 x 1.5
Metal entry possible 2	No
Entries installation options/side	Size 1: 2x M20 (C+D)
Terminal rail	15 x 70 mm (1x)
Terminal rail	0,59 x 2,76 " (1x)
Type of terminals 1	3 x WAGO 264-220 4-conductor, 2.5 mm <sup>2</sup> , grey
Type of terminals PE 1	1 x WAGO 264-727/999-950 4-conductor, 2.5 mm <sup>2</sup> , green-yellow
	For connection cross-sections, see the manufacturer's data sheet

### Technical Drawings – Subject to Alterations

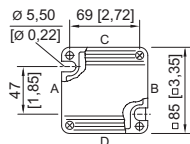


"—" = marking for mounting options

### Dimensional Drawings (All Dimensions in mm [inches]) – Subject to Alterations



Length L  
 Projection dimension for cable gland of Series 8161:  
 For M20: 25 to 31 [0.98 to 1.22]  
 For M25: 27 to 33 [1.06 to 1.3]  
 For M32: 32 to 39 [1.26 to 1.54]  
 Projection dimension for cable gland with strain relief  
 of Series HSK-K-MZ  
 For M25: 41 [1.61]



8118/1.  
 Enclosure SZ 1

### Accessories

#### Plastic cable gland



8161/7-M20-1304, Ex e  
 Plastic, M20 x 1.5, cable outer diameter 4 to 13 mm  
 Lot size 50 pieces

Art. No.

239156

#### Stopping plug



8290/3-M20  
 Plastic, M20 x 1.5  
 Lot size 100 pieces



Art. No.

285773

8118/112-047-0 Art. No. 224642

### Brass plate with thread

### Art. No.

	8118 SZ 1, plate 37 x 30 mm [1.46 x 1.18 inch] 1 x M20 x 1.5 with M4 PE connection (left) Can be installed in enclosures of SZ 1, SZ 2 and SZ 3	168913
	8118 SZ 1, plate 37 x 30 mm [1.46 x 1.18 inch] 1 x M20 x 1.5 with M4 PE connection (right) Can be installed in enclosures of SZ 1, SZ 2 and SZ 3	168914

We reserve the right to make alterations to the technical data, dimensions, weights, designs and products available without notice. The illustrations cannot be considered binding.