

CMP-737-D-M3-T2-4 Art. No. 225053



- Metal Ex d and Ex e adaptors
- Wide selection of thread types and sizes
- Operating temperature range -60 °C to +200 °C
- Globally certified in accordance with IECEx, ATEX, UL and cCSAus

MY R. STAHL 737DB



The Series 737 metal Ex d and Ex e adaptors make it possible to adapt thread sizes and types. There is a wide selection of different versions available for this. They have global certification according to IECEx, ATEX, UL and cCSAus.

Technical Data

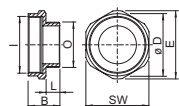
Explosion Protection	
Application range (zones)	1, 2, 20, 21, 22
IECEX gas certificate	IECEX CML 18.0177X
IECEX gas certificate 2	IECEX SIM 15.0002X
IECEX gas explosion protection	Ex eb IIC Gb
IECEX dust certificate	IECEX CML 18.0177X
IECEX dust explosion protection	Ex ta IIIC Da
IECEX firedamp certificate	IECEX CML 18.0177X
IECEX firedamp protection	Ex db I Mb
IECEX firedamp protection 2	Ex eb I Mb
ATEX gas certificate	CML 18ATEX1320X
ATEX gas explosion protection	Ex II 2 G Ex eb IIC Gb
ATEX dust certificate	CML 18ATEX1320X
ATEX dust explosion protection	Ex II 1 D Ex ta IIIC Da
ATEX firedamp certificate	CML 18ATEX1320X
ATEX firedamp protection	Ex I M2 Ex db I Mb
ATEX firedamp protection 2	Ex I M2 Ex eb I Mb
cCSA certificate	1055233
CSA gas certificate	1055233
Marking ULus	Class I, Zone 1 AEx eb IIC T6 Class I, Div. 2, Groups A,B,C,D Class II, Div. 2, Groups F,G Class III, Div. 2
Marking cUL	Class I, Zone 1 Ex eb IIC T6 Class I, Div. 2, Groups A,B,C,D Class II, Div. 2, Groups F,G
Notes	The product certificates can be downloaded from the manufacturer's homepage (www.cmp-products.com)
Ambient Conditions	
Ambient temperature	-60 °C ... +200 °C

CMP-737-D-M3-T2-4 Art. No. 225053

Mechanical Data

Version	Metric/NPT
Degree of protection (IP)	IP66
Degree of protection note	IP67 and IP68 mounting according to the specifications of the manufacturer, CMP. The specified degrees of protection are only fulfilled if CMP installation accessories are used.
Degree of protection (IP) UL	IP66
Material	Stainless steel
Silicone-free	Yes
Width across flats	30 mm
Outer diameter	33 mm
External thread	M25
Thread size	M25
Thread length	15.3 mm
Thread pitch	1,5
Thread pitch 2	14 TPI
Internal thread	NPT3/4
Protrusion length	19.7 mm
Impact strength (IEC 62262)	IK10
Packaging unit	1
Weight	133 g
Weight	0.29 lb

Dimensional Drawings (All Dimensions in mm [inches]) – Subject to Alterations



O = External thread
I = Internal thread
SW = Width across flats
E = Width across corners
B = Length
L = Thread length

We reserve the right to make alterations to the technical data, dimensions, weights, designs and products available without notice. The illustrations cannot be considered binding.