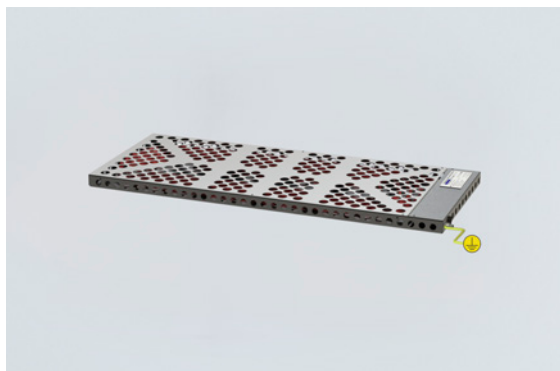


TEF92070001 Art. No. 242179



- Low profile, easy to fit inside cabinets
- Self-regulating heating element. Prevents overheating
- Rugged AISI 316L, acid steel construction
- Low maintenance
- For use inside equipment enclosures and cabinets to prevent condensation and provide climatic control
- Frost protection

MY R. STAHL T9207A



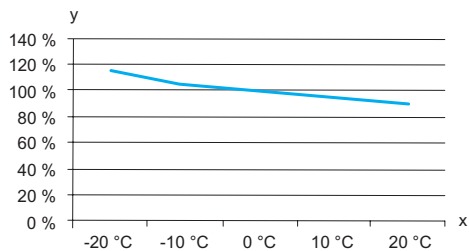
Globally approved Ex e, self regulating enclosure heater. AISI 316L acid resistant steel enclosure. With connection line for electrical connection. Delivered with power output from 100 W up to 500 W at 0 °C.

## Technical Data

<b>Explosion Protection</b>	
Application range (zones)	1, 2
IECEX gas certificate	IECEX NEM 11.0005X
IECEX gas explosion protection	Ex e IIC T3 Gb
ATEX gas certificate	NEMKO 11ATEX1098X
ATEX gas explosion protection	Ex II 2 G Ex e IIC T3 Gb
<b>Electrical Data</b>	
Power	100 W
Frequency range	50 – 60 Hz
<b>Ambient Conditions</b>	
Ambient temperature	-50 °C ... +50 °C (live)
Storage temperature	-50 °C ... +80 °C
<b>Mechanical Data</b>	
Degree of protection (IP)	IP66
Enclosure material	Stainless steel 1.4404
Type of connection cable	2 x 2.5 + PE
Cable length	1 m
Dimension A	200 mm
Dimension B	300 mm
Dimension C	30 mm
Dimension D	190 mm
Dimension E	160 mm
Weight	-

TEF92070001 Art. No. 242179

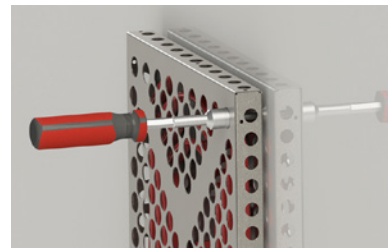
**Technical Drawings – Subject to Alterations**



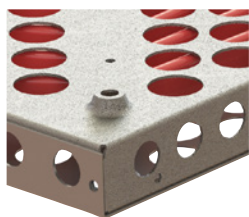
Estimated power output of heater in respect to ambient temperature  
y = Effect %, x = Ambient temperature °C



Hold the heater close to the installation surface, and insert the M6 screws in each of the 4 mounting holes.

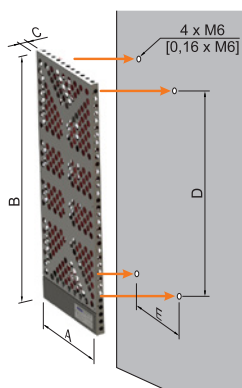


Use a tool to tighten the screws firmly to secure the heater.



4 x Ø 6 mm mounting holes on the rear side of the heater

**Dimensional Drawings (All Dimensions in mm [inches]) – Subject to Alterations**



Nominal output <sup>1)</sup>	Overall dimensions			Mounting dimensions			Length connection line
	A	B	C	D	E		
100 W	200	300	30	190	160	1.62 kg	1 m
200 W	240	550	30	440	200	3.44 kg	1.5 m
300 W	280	700	30	590	240	5.42 kg	1.5 m
500 W	360	870	30	760	320	8.02 kg	1.5 m

<sup>1)</sup> **Note: Nominal output at still air at 0 °C**

We reserve the right to make alterations to the technical data, dimensions, weights, designs and products available without notice. The illustrations cannot be considered binding.