

8252/5 Art. No. 249783



MY R. STAHL 8252B



### Technical Data

#### Explosion Protection

|                                 |  |
|---------------------------------|--|
| Application range (zones)       | 1, 2, 21, 22                             |
| IECEX gas certificate           | IECEX BVS 11.0059X                       |
| IECEX gas explosion protection  | Ex d [ia/ib Ga/Gb] IIC T4-T6 Gb          |
| IECEX dust certificate          | IECEX BVS 11.0059X                       |
| IECEX dust explosion protection | Ex tb IIIC T80°C-130°C Db                |
| ATEX gas certificate            | BVS 11 ATEX E 114 X                      |
| ATEX gas explosion protection   | Ⓔ II 2 G Ex d [ia/ib Ga/Gb] IIC T4-T6 Gb |
| ATEX dust certificate           | BVS 11 ATEX E 114 X                      |
| ATEX dust explosion protection  | Ⓔ II 2 D Ex tb IIIC T80°C-130°C Db       |
| Certificates                    | ATEX (BVS), IECEX (BVS), India (PESO)    |

#### Electrical Data

|                              |               |
|------------------------------|---------------|
| Rated operational voltage AC | 690 V         |
| Rated operational current    | 175 A (T4-T6) |

#### Ambient Conditions

|                     |                   |
|---------------------|-------------------|
| Ambient temperature | -60 °C ... +70 °C |
|---------------------|-------------------|

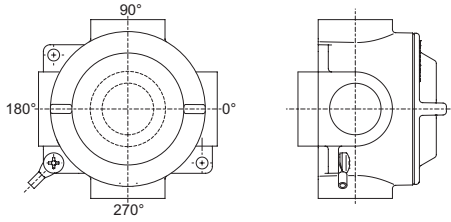
#### Mechanical Data

|                           |  |
|---------------------------|--|
| Degree of protection (IP) | IP66   |
| Enclosure material        | Cast aluminium alloy, Copper-free, powder-coated |
| Enclosure colour          | Light grey (RAL 7032)                            |
| Width                     | 120 mm   |
| Height                    | 120 mm   |
| Built-in components       | According to the order                           |
| Floor openings (BASE)     | According to the order                           |
| Left openings (180°)      | According to the order                           |
| Top openings (90°)        | According to the order                           |
| Right openings (0°)       | According to the order                           |
| Bottom openings (270°)    | According to the order                           |
| Weight                    | -  |

8252/5 Art. No. 249783

---

### Technical Drawings – Subject to Alterations



We reserve the right to make alterations to the technical data, dimensions, weights, designs and products available without notice. The illustrations cannot be considered binding.