



- Modular component for monitoring motor overload up to 37 kW/50 hp at 400/480 V
- The electronic relay is not affected by fluctuations in the ambient temperature
- Large cable dia. range of the main terminals
- Trigger class E5, E10, E20 and E30 can be selected via type code
- Integrated earth fault protection
- Wide adjustment range of the overload release from 20 to 80 A
- Integrated reset button and electronic reset via 24 V DC actuation

MY R. STAHL 8550B



The R. STAHL Series 8550 electronic overload relay is a component for monitoring the load current of motors. It reliably reports an overload and safely shuts off the motor using a contactor. Together with the moulded case circuit breaker in the same series which is also available, these three components form a motor starter which reliably controls powers up to 37 kW/50 hp at 400 or 480 V (other powers available on request). Earth fault protection is also integrated. This means that Ex d and Ex e motors are safely protected at all points. The broad adjustment range of the overload current optimises the variety of versions. Resetting in case of error is either done manually on the unit on-site via the integrated reset button, or electrically via the control system.

Technical Data

Explosion Protection

Application range (zones)	1, 2
Application range (Zone) note	For use in Zone 21/22 when protected by Ex tb/tc enclosure
IECEX gas certificate	IECEX FMG 22.0005U
IECEX gas certificate	IECEX FMG 22.0005U
IECEX gas explosion protection	Ex db eb IIC Gb
ATEX gas certificate	FM 22 ATEX 0017 U
ATEX gas certificate	FM 22 ATEX 0017 U
ATEX gas explosion protection	⊕ II 2 G Ex db eb IIC Gb
FMus certificate	FM22US0011U
cFM certificate	FM22CA0006U
Marking FMus	Class I, Div. 2, Groups A,B,C,D; Class I, Zone 1, AEx IIC Gb;
Marking cFM	Class I, Zone 1, Ex db eb IIC Gb; Class I, Div. 2, Groups A,B,C,D;
Certificates	ATEX (FM), Brazil (ULB), Canada (FM), IECEX (FM), USA (FM)

Electrical Data

Trigger class	Class E10
Rated operational voltage	690 V
Rated operational current	20 – 80 A
Frequency	50 ... 60 Hz
Main contacts	3-pole
Auxiliary contacts	2 (1 NO + 1 NC)
1st auxiliary function for AC rated voltage	-
1st auxiliary function voltage max. DC	-

Electrical Data

1st auxiliary function for rated current max.	-
2nd auxiliary function voltage AC	-
2nd auxiliary function voltage max. DC	-
2nd auxiliary function for rated current max.	-

Ambient Conditions

Ambient temperature	-25 °C ... +60 °C
Ambient temperature	-13 °F ... +140 °F

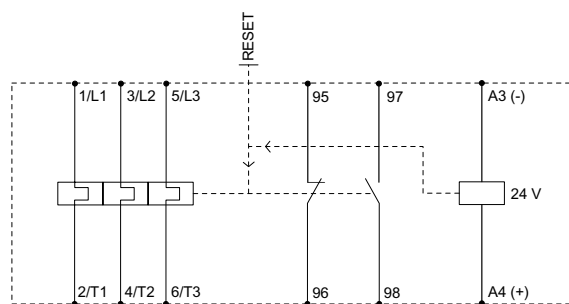
Mechanical Data

Degree of protection (IP)	IP20
Enclosure material	Thermoplast
Connection cross-section	10 – 25 mm ²
Connection cross-section AWG	8 ... 4 AWG
Auxiliary contact connection cross section	0.75 ... 2.5 mm ²
Auxiliary contact connection cross section AWG	18 ... 14 AWG
Width	150 mm
Width, inches	5.91 in
Height	196 mm
Height in inches	7.72 in
Depth	336.6 mm
Depth in inches	13.25 in
Weight	8.82 lb

Mounting / Installation

Tightening torque	5 – 5.5 Nm
Tightening torque lbf in	44.2 to 48.6 lbf-in
Tightening torque auxiliary contact	0.4 – 0.6 Nm
Tightening torque auxiliary contact lbf in	3.54 ... 5.31 lbf-in

Technical Drawings – Subject to Alterations



Circuit diagram of the device

Components for system solutions

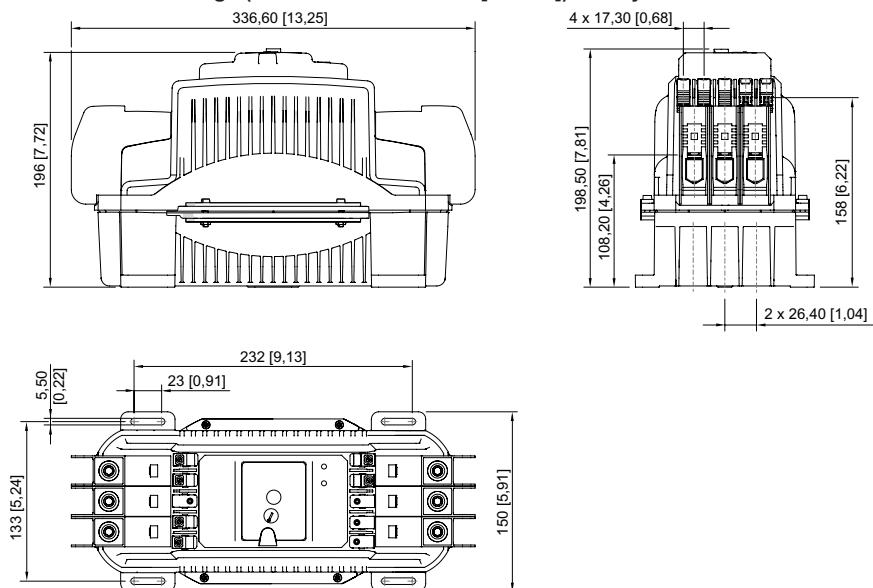
Overload protection

20 - 80 A

8550/1-OL-GLS3-E10-80-25-11 Art. No. 307564



Dimensional Drawings (All Dimensions in mm [inches]) – Subject to Alterations



We reserve the right to make alterations to the technical data, dimensions, weights, designs and products available without notice. The illustrations cannot be considered binding.