

CMP-767-D-M7-5 Art. No. 253044



- Metal Ex d and Ex e stopping plugs
- Wide selection of metric thread sizes
- Operating temperature range -60 °C to +200 °C
- Global certification, IECEx, ATEX, cCSAus and UL

MY R. STAHL 767DA



The Series 767 metal Ex d and Ex e stopping plugs with flat round head and hexagon socket make it possible to temporarily or permanently seal unused drilled holes. There is a wide selection of different metric thread sizes available for this. They have global certification according to IECEx, ATEX, UL and cCSAus.

Technical Data

Explosion Protection

Application range (zones)	1, 2, 20, 21, 22
IECEX gas certificate	IECEX SIM 15.0002X
IECEX gas explosion protection	Ex db IIC Gb
IECEX dust certificate	IECEX CML 18.0177X
IECEX dust explosion protection	Ex ta IIIC Da
IECEX firedamp certificate	IECEX CML 18.0177X
IECEX firedamp protection	Ex db I Mb
IECEX firedamp protection 2	Ex eb I Mb
ATEX gas certificate	CML 18ATEX1320X
ATEX gas explosion protection	Ex II 2 G Ex db IIC Gb
ATEX dust certificate	CML 18ATEX1320X
ATEX dust explosion protection	Ex I 1 D Ex ta IIIC Da
ATEX firedamp certificate	CML 18ATEX1320X
ATEX firedamp protection	Ex I M2 Ex db I Mb
ATEX firedamp protection 2	Ex I M2 Ex eb I Mb
Notes	The product certificates can be downloaded from the manufacturer's homepage (www.cmp-products.com)

Ambient Conditions

Ambient temperature	-60 °C ... +200 °C
---------------------	--------------------

Mechanical Data

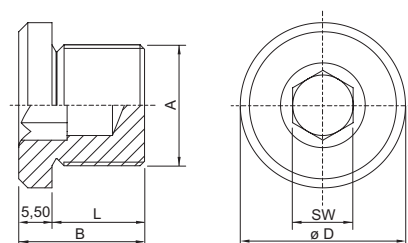
Degree of protection (IP)	IP66
Degree of protection note	IP67 and IP68 mounting according to the specifications of the manufacturer, CMP
Degree of protection (IP) UL	IP66
Material	Nickel-plated brass
Silicone-free	Yes
Drive	Hexagon socket
Width across corners	68 mm

CMP-767-D-M7-5 Art. No. 253044

Mechanical Data

Hexagon socket width across flats	M10
Height	5.5 mm
Outer diameter	68 mm
Thread size	M63
Thread length	15 mm
Thread pitch	1,5
Packaging unit	1
Weight	500 g
Weight	1.1 lb

Dimensional Drawings (All Dimensions in mm [inches]) – Subject to Alterations



A = Thread size
 B = Length
 L = Thread length
 D = Outer diameter
 SW = Width across flats

We reserve the right to make alterations to the technical data, dimensions, weights, designs and products available without notice. The illustrations cannot be considered binding.