

Lighting

Linear luminaire With LED

GRP industrial design

L402/4348-6100-152-LLL2-22-8500 Art. No. 316966



- Highly resistant industrial design
- Linear luminaire with long-life, efficient LED technology (up to 138 lm/W)
- Lightweight yet extremely robust, with an impact strength rating of IK10

MY R. STAHL L402A

The EXLUX L402/4 luminaire is designed for industrial use and can be fitted to the ceiling, a pole, or alternatively, it can be suspended. A bright light for not much energy is what you get with this efficient LED technology, which offers the added benefit of increased service life – this can be as much as 100,000 hours. The plastic enclosure is easily to open by a central lock.

Technical Data

Explosion Protection

Ex version	Industrial design
------------	-------------------

Electrical Data

Rated operational voltage AC	100 ... 240 V
Rated operational voltage DC	200 ... 250 V
Frequency range	50 – 60Hz

Lighting Data

Number of lamps	1
Lamp wattage	42 W
Lamp	LED
Light colour	5000 K – neutral white
Light distribution	120°x120° with diffusing glass
Luminaire efficacy	138 lm/W
Luminous flux	5810 lm
Colour rendering	≥ 80
Colour temperature	5000 K

Ambient Conditions

Ambient temperature	-40 °C ... 55 °C Note: Through wiring Max. 3x16 A -40 °C ... 60 °C Note: Through wiring 2 Max. 3x10 A
Note	Through wiring max. 3x16 A Ambient temperature °C -40 °C ... +55 °C Through wiring 2 max. 3x10 A Ambient temperature °C 2 -40 ... +60 °C

Mechanical Data

Version	Standard
IP degree of protection (IEC 60598)	IP66/IP67
Class	I (with inner PE connection)
Enclosure material	Polyester resin, Glass fibre reinforced

Linear luminaire With LED
GRP industrial design
L402/4348-6100-152-LLL2-22-8500 Art. No. 316966

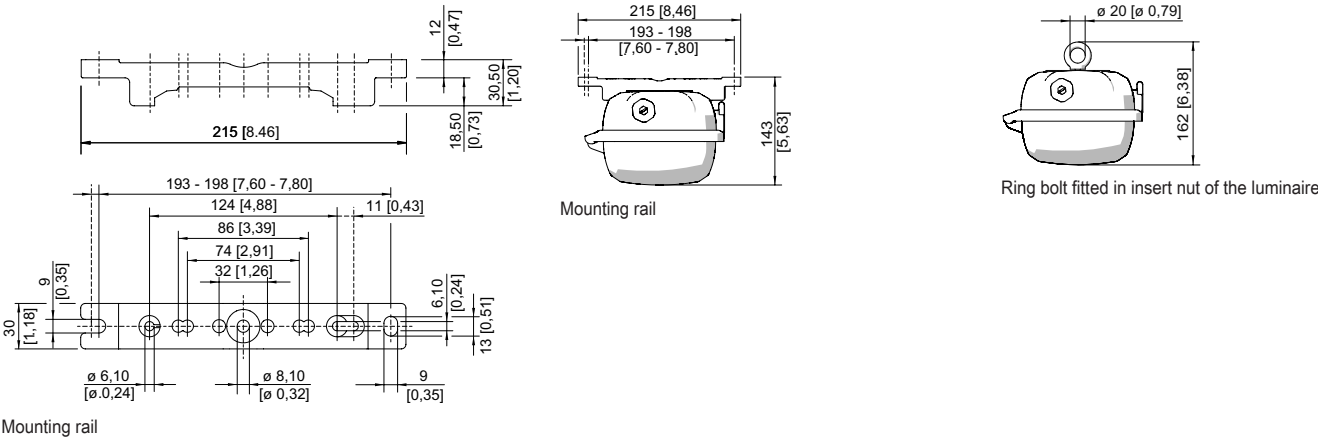
Mechanical Data

Enclosure colour	Light grey (RAL 7035)
Diffuser	With diffuser
Sealing material	Silicone
Silicone-free content	Contains silicone
Translucent cover material	Polycarbonate
Installed terminal strip	PE + N + L1 + L2 + L3
Max. solid connection terminals	6 mm²
Max. finely stranded connection terminals	4 mm²
Type of connection cable	Finely stranded Solid
Size	4
Width	184 mm
Height	125 mm
Length	1310 mm
Impact strength (IEC 62262)	IK10
Weight	6 kg
Weight	13.23 lb
Disconnection of the luminaire	No

Components

Threaded plate	2x SS430 stainless steel
Ballast	VG Luxtronic 40 W 300 mA
Through wiring	With 5 conductors 2.5 mm²
Drilled holes	4 x M20
Cable glands and entries	can be ordered as an accessory
Stopping plugs	3 x M20 x 1.5
Stopping plug material	Polyamide, black
Accessories	Installed

Dimensional Drawings (All Dimensions in mm [inches]) – Subject to Alterations



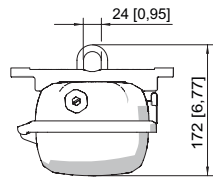
Lighting

Linear luminaire With LED

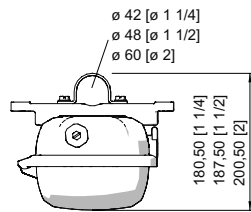
GRP industrial design

L402/4348-6100-152-LLL2-22-8500 Art. No. 316966

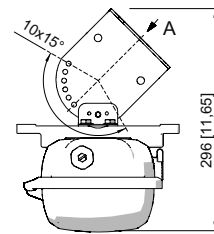
STAHL



Mounting bracket fitted in mounting rail



Pipe clamp fitted in mounting rail

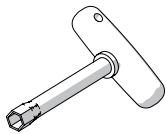


A

Wall mounting bracket fitted in mounting rail

Accessories

Box spanner

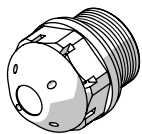


M8 / A/F 13;
For actuating the central lock

Art. No.

222430

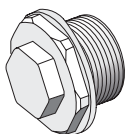
Breather



Thread: M25 x 1.5 (20 pieces); without jam nut

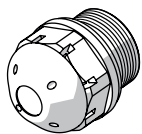
Art. No.

285780



Thread: M25 x 1.5 (1 piece); for installation in light fittings; made from stainless steel; without jam nut

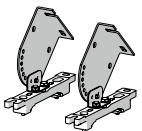
296608



M25 x 1.5 in order to avoid condensate formation

115738

Ceiling and wall mounting bracket



mounted on a mounting rail for a variable mounting distance; Material: stainless steel; Lamp can be swiveled in steps of 15°; 1 pair

Art. No.

222827

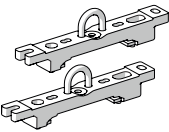
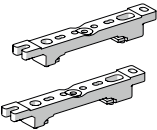
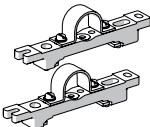
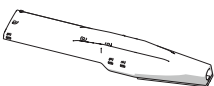
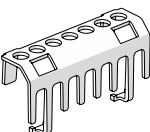

Holder for translucent cover



The fall prevention system for the light fitting cover prevents the light fitting cover from falling accidentally when the light fitting is opened.

Art. No.

226791

Mounting bracket		Art. No.
	mounting clamp mounted on a mounting rail for a variable mounting distance; 1 pair	222456
Mounting rail		Art. No.
	for a variable mounting distance; 1 pair	222826
Pipe clamp		Art. No.
	R 1 1/2"; with mounting rail for a variable mounting distance; material: stainless steel; 1 pair	222459
	R 1 1/4"; with mounting rail for a variable mounting distance; Material: stainless steel; 1 pair	222458
	R 2"; with mounting rail for a variable mounting distance; Material: stainless steel; 1 pair	222460
Pole mounting sleeve		Art. No.
	for the subsequent mounting on lights size 2 and size 4, completely with assembly parts (for pipe diameter 42 mm)	227512
Protection against accidental contact		Art. No.
	The protection against accidental contact prevents maintenance technicians and electrical installers from accidentally touching conductive parts. The degree of protection is increased to IP20 when the protection against accidental contact is used.	283153
Ring bolt		Art. No.
	M8, direct mounting in insert nuts; 1 pair	115736

We reserve the right to make alterations to the technical data, dimensions, weights, designs and products available without notice. The illustrations cannot be considered binding.