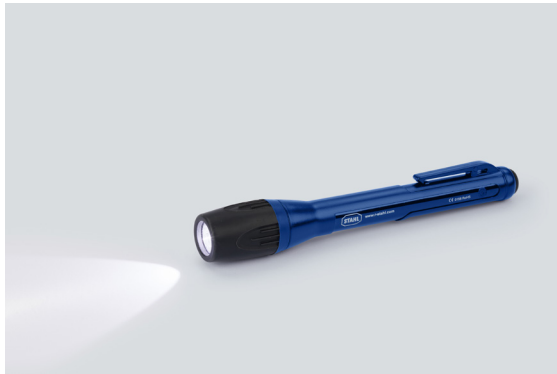


6141/61-1S Art. No. 270805



- Uses alkaline batteries so you are not restricted by the power supply location
- Energy-saving LED technology
- Rubber-coated lamp head
- Rubber-coated rear switch for single-handed operation
- 100% waterproof with IP68 protection (3 m, 30 min)
- Snap-in system for attaching to helmets and belts provides versatility
- Supplied in blister pack including batteries

MY R. STAHL 6141F



The 6141/61-1S battery-powered hand lamp is small enough to fit into any pocket, so that it is within easy reach when it is needed. Featuring efficient LED technology, it provides a clear view for maintenance and inspection tasks – even in hazardous areas.

The practical pushbutton for single-handed operation makes the lamp quick and easy to use. Its robust housing meets the requirements of the IP68 level of protection and guarantees complete reliability – even in the harshest of conditions.

Approved for gas hazardous areas in accordance with ATEX and IECEx, the 6141/61-1S is the perfect accessory for safe use in Zones 1 and 2.

Technical Data

Explosion Protection

Ex version	Yes
Application range (zones)	1, 2
IECEX gas certificate	IECEX BVS 21.0072X
IECEX gas explosion protection	Ex ib IIB T4 Gb
ATEX gas certificate	BVS 21 ATEX E 065 X
ATEX gas explosion protection	Ex II 2 G Ex ib IIB T4 Gb
Certificates	ATEX (BVS), IECEx (BVS)

Electrical Data

Rated operational voltage DC	1.5 V
Outdoor range	35 m
Battery version	2 x AAA

Lighting Data

Number of lamps	1
Lamp wattage	1 W
Lamp	LED CREE LED (1 W)
Light colour	6500 K
Luminous flux	30 lm
Emergency light duration	~ 10 h

Ambient Conditions

Ambient temperature	-20 °C ... +40 °C
---------------------	-------------------

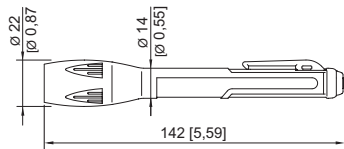
6141/61-1S Art. No. 270805

Mechanical Data


Degree of protection (IP)	IP68 (3 m, 30 min.)
Enclosure material	Polycarbonate
Enclosure colour	Blue
Width	22 mm
Height	22 mm
Length	142 mm
Weight	85 g
Weight	0.19 lb



Components

Battery-Version	2 x AAA, maintenance-free, 1.5 V
-----------------	----------------------------------

Dimensional Drawings (All Dimensions in mm [inches]) – Subject to Alterations**Accessories**

Belt bag		Art. No.
	black	204142


SNAP-IN system		Art. No.
	attaching to helmets and belts for 6141/61-1S	340025

Helmet mount		Art. No.
	Helmet mount SOLO for Series 6141	340026
	Helmet mount PRO for Series 6141	340027

Belt holder		Art. No.
	for Series 6141	340028

6141/61-1S Art. No. 270805

Spare Parts

Battery		Art. No.
	4 x Daimon (by Duracell) LR03	204144

We reserve the right to make alterations to the technical data, dimensions, weights, designs and products available without notice. The illustrations cannot be considered binding.