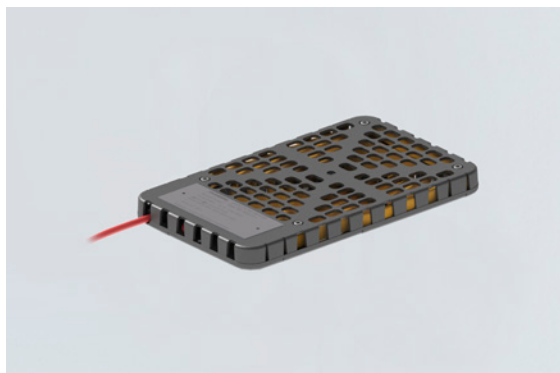


TEF9202010 Art. No. 262777



- Light weight composite structure
- Compact
- Easy to install
- Can be supplied with DIN rail module
- Self regulating heating element. Prevents overheating.
- Low maintenance
- Corrosion proof
- Fire resistant, flame retardant UL94, Classification V-0
- Low inrush current

MY R. STAHL T9202A



Globally approved Ex e, self regulating enclosure heater. Made of light weight composite material.

Technical Data

Explosion Protection

| | |
|--------------------------------|--------------------------|
| Application range (zones) | 1, 2 |
| IECEX gas certificate | IECEX PRE 17.0016X |
| IECEX gas explosion protection | Ex e IIC T4 Gb |
| ATEX gas certificate | Presafe 17 ATEX 9667 X |
| ATEX gas explosion protection | Ex II 2 G Ex e IIC T4 Gb |

Electrical Data

| | |
|------------------------------|------------|
| Rated operational voltage AC | 230 V |
| Power | 50 W |
| Frequency range | 50 – 60 Hz |

Ambient Conditions

| | |
|---------------------|--------------------------|
| Ambient temperature | -50 °C ... +50 °C (live) |
| Storage temperature | -50 °C ... +80 °C |

Mechanical Data

| | |
|---------------------------|-----------------------|
| Degree of protection (IP) | IP66 |
| Degree of protection note | For use in enclosures |
| Enclosure material | Composite material |
| Type of connection cable | 2 x 2.5 + PE |
| Cable length | 1.5 m |
| Dimension A | 180 mm |
| Dimension B | 300 mm |
| Dimension C | 30 mm |
| Dimension D | 140 mm |
| Dimension E | 201 mm |
| Weight | - |

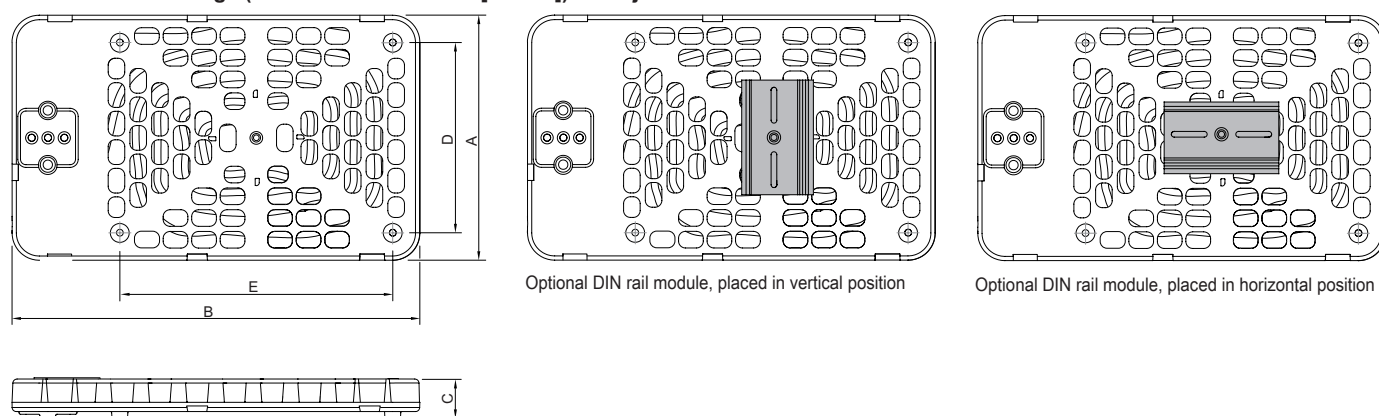
TEF9202010 Art. No. 262777

Technical Drawings – Subject to Alterations



Estimated power output of heater in respect to ambient temperature
y = Effect %, x = Ambient temperature °C

Dimensional Drawings (All Dimensions in mm [inches]) – Subject to Alterations



| Nominal output ¹⁾ | Overall dimensions | | | Mounting dimensions | | Weight |
|------------------------------|--------------------|-----|----|---------------------|-----|---------|
| | A | B | C | D | E | |
| 50 W | 180 | 300 | 30 | 140 | 201 | 0,56 kg |
| 100 W | 180 | 300 | 30 | 140 | 201 | 0,76 kg |

¹⁾ Note: Nominal output at still air at 0 °C

Accessories

| Support for mounting rail | Art. No. |
|---------------------------|----------|
| DIN rail module | 263934 |

We reserve the right to make alterations to the technical data, dimensions, weights, designs and products available without notice. The illustrations cannot be considered binding.