

Control and signalling devices

Control devices for panel mounting

Ex e

8003/111-008-2-r-MS1 Art. No. 269812



- Flexible configuration thanks to pushbutton, mushroom push-button, mushroom stay-put button, mushroom stay-put button with key lock, key-operated button and key-operated switch
- Easy to install using a single hole
- Codable "latching", "spring return" and "key not removable" functions
- Spring clamp terminals with connection chamber

MY R. STAHL 8003B



R. STAHL Series 8003 switches and control buttons for panel mounting take on various switching functions in latching and spring return positions up to 6 A, which can be subsequently recoded. They are fully certified, explosion-protected equipment with an Ex e connection chamber. With the patented mounting mechanism, panel mounting with drilled holes or openings of 30.5 mm is quick and easy.

Compatible actuators are available for a comprehensive range of applications.

Technical Data

Explosion Protection

| | |
|---------------------------------|--|
| Area of application | European Union (ATEX) IECEX CCC |
| Application range (zones) | 1, 2, 21, 22 |
| IECEX gas certificate | IECEX PTB 06.0065X |
| IECEX gas explosion protection | Ex db eb IIC T6 Gb |
| IECEX dust certificate | IECEX PTB 06.0065X |
| IECEX dust explosion protection | Ex tb IIIC T80 °C Db |
| ATEX gas certificate | PTB 02 ATEX 1057 X |
| ATEX gas explosion protection | ⊕ II 2 G Ex db eb IIC T6 Gb |
| ATEX dust certificate | PTB 02 ATEX 1057 X |
| ATEX dust explosion protection | ⊕ II 2 D Ex tb IIIC T80 °C Db |
| Certificates | ATEX (PTB), China (CQST), IECEX (PTB), Korea (KGS) |
| Declaration of conformity | ATEX (EUK), China (CCC) |
| Notes | Product label may vary. Series devices are labelled with ATEX and IECEX. |

Electrical Data

| | |
|--|----------------------------|
| AC rated operational voltage | 500 V |
| Rated operational current | 6 A |
| Rated operational current | 6 A |
| Switching capacity AC-12 | 500 V / 6 A / max. 3000 VA |
| Switching capacity AC-15 | 400 V / 6 A / max. 1250 VA |
| Switching capacity DC-13 | 110 V / 1 A / max. 110 W |
| Switching capacity DC-13 2 contact elements in series | 60 V/6 A |

Ambient Conditions

| | |
|---------------------|------------------|
| Ambient temperature | -20 °C ... 60 °C |
|---------------------|------------------|

Control and signalling devices

Control devices for panel mounting



Ex e

8003/111-008-2-r-MS1 Art. No. 269812

Ambient Conditions

| | |
|---------------------|-------------------|
| Ambient temperature | -4 °F ... +140 °F |
|---------------------|-------------------|

Mechanical Data

| | |
|---------------------------------------|------------------------------------|
| Degree of protection (IP) (IEC 60529) | Reverse side IP65, front side IP66 |
| Enclosure material | Polyamide |
| Contact material | Silver-nickel |
| Silicone-free | Yes |
| Number of NCs | 1 |
| Number of NOs | 1 |
| Number of switching positions | 2 |
| Connection cross-section | 0.75 ... 1.5 mm ² |
| Connection cross-section AWG | 18 AWG ... 12 AWG |
| Mounting depth | 130 mm |
| Mounting depth in inches | 5.12 in |
| Service life, min. | 10 ⁵ operating cycles |
| Weight | 222 g |

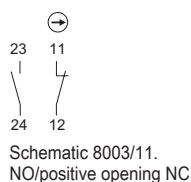
Mounting / Installation

| | |
|--------------------------|--------------|
| Tightening torque | 3 N · m |
| Tightening torque lbf in | 26.55 lbf in |

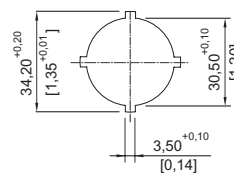
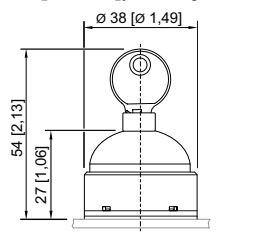
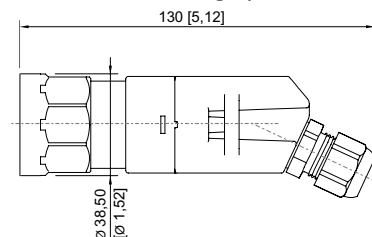
Components

| | |
|--------------|--|
| Actuator | Key-operated switch actuator With key actuator MS1 |
| Entry 1 | 8161/7-M16-0902 |
| Entry 1 type | Polyamide cable gland, black |

Technical Drawings – Subject to Alterations



Dimensional Drawings (All Dimensions in mm [inches]) – Subject to Alterations



Punch pattern

8003/...-008 key-operated switch

Control and signalling devices

Control devices for panel mounting



Ex e

8003/111-008-2-r-MS1 Art. No. 269812



Cut-out with/without additional designation plate

Accessories

Actuators



for key-operated switches with 2 switching positions, MS1 with 2 keys

Art. No.

155538

Closing part



8602C3-733-B
for closing unused holes in cover, dia. 30.5 mm, NBR

8602C3-733-S
for closing unused holes in cover, dia. 30.5 mm, silicone

Art. No.

244306

244307

Spare Parts

Label holder



Label holder, size 1, without insert disc
Labelling: 1-line
can be installed in dia. 30.5 mm drilled holes for actuators

Art. No.

155632



Label holder, size 2, without insert disc
Labelling: 1- or 2-line
can be installed in dia. 30.5 mm drilled holes for actuators

Art. No.

155687



Label holder, size 3, without insert disc
Labelling: 1-, 2- or 3-line
can be installed in dia. 30.5 mm drilled holes for actuators

Art. No.

155844

Protective collar



8602A0751 metal
for pushbutton/selector switch/mushroom stay-put button with key lock/mushroom stay-put button/mushroom pushbutton dia. 39
BG001, BG003, BG005, BG008, BG009, BG010, BG012

Art. No.

155326

Control and signalling devices


Control devices for panel mounting

Ex e




8003/111-008-2-r-MS1 Art. No. 269812



Spare key

| | | Art. No. |
|--|-------------|----------|
|  | Closing MS1 | 107109 |

Insert discs for label holder

| | | Art. No. |
|--|--|----------|
|  | One-line Plain Material: PVC Colour: White Self-adhesive | 238271 |
|  | Two-line Plain Material: PVC Colour: White Self-adhesive | 238272 |
|  | Three-line Plain Material: PVC Colour: White Self-adhesive | 238273 |

Conversion kit for key-operated switch

| | | Art. No. |
|--|-------------------------------------|----------|
| | Coding element, 1 x red, 1 x green | 155403 |
| | Coding element, 1 x yellow, 1 x red | 155432 |
| | Coding element, 2 x yellow | 155373 |

We reserve the right to make alterations to the technical data, dimensions, weights, designs and products available without notice. The illustrations cannot be considered binding.