

8146/2073 Art. No. 278808



- Wide range of Ex i terminal boxes in various sizes and materials
- Degree of protection IP66
- Customised equipping in accordance with customer specifications
- Enclosures with captive cover screws
- If required, flange on enclosure sides is possible

MY R. STAHL 8146T



R. STAHL Series 8146 terminal boxes, made of high-quality, glass fiber-reinforced polyester resin, are ideal for use in harsh operating conditions. With eight basic sizes in various heights, they are universally usable. If requested by the customer, they are equipped with series terminals up to 300 mm² and, as an option, a flange on several enclosure sides is possible.

Technical Data

Explosion Protection

Area of application	NEC® CE Code
Application range (zones)	1, 2, 21, 22
Certification ULus	E177642
Certificate cUL	E177642
Marking cUL	Class I, Zone 1 IIC T6 Class I, Div. 1, 2, Groups A,B,C,D Class II, Div. 1, 2, Groups E,F,G Class III Enclosure Type 3, 4, 4X
Certificates	ATEX (PTB), IECEx (PTB), India (PESO), Korea (KGS), Taiwan (ITRI)

Electrical Data

Rated operational voltage AC	0 ... 60 V
------------------------------	------------

Ambient Conditions

Ambient temperature °C	-50 °C ... +75 °C
Ambient temperature °F	-58 °F ... +167 °F

Mechanical Data

IP degree of protection (IEC 60529)	IP66
Degree of protection (IP) UL	IP66
Enclosure material	Polyester resin, glassfiberforsterket
Enclosure color	mørk grå
Flammability according to	IEC/EN 60695 UL 94 ASTM D635
Silicone-free	Nei
Connection cross-section	2.5 mm ²
Connection cross-section AWG	14 AWG
Cover thickness	2.8 mm

8146/2073 Art. No. 278808

Mechanical Data

Cover thickness in inches	0.11 in
Wall thickness	2.8 mm
Wall thickness in inches	0.11 in
Width	340.5 mm
Width, inches	13.406 in
Height	170 mm
Height in inches	6.692 in
Depth	150 mm
Depth in inches	5.906 in
Weight	3 kg
Weight	6.61 lb

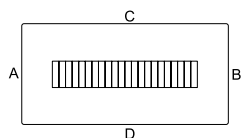
Mounting / Installation

Tightening torque of cover screw 1	4.5 N · m
Tightening torque of cover screw 1 lbf in	39,83 lbf in

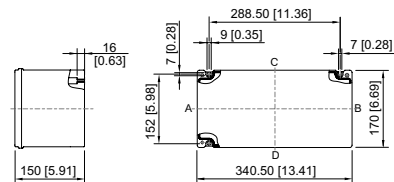
Components

Flange and plates	uten flens
Entries installation options/side	uten borede hull
Terminal rail	35 x 301 mm (1x)
Terminal rail	1,38 x 11,85 " (1x)
Type of terminals 1	1 x Phoenix UT 2-tråds 2,5 mm ² blå
PA terminal	1 x Phoenix UT 2.5 mm ² grey

Technical Drawings – Subject to Alterations



Dimensional Drawings (All Dimensions in mm [inches]) – Subject to Alterations



8146/073

We reserve the right to make alterations to the technical data, dimensions, weights, designs and products available without notice. The illustrations cannot be considered binding.