



STAHL

EXCOM

REMOTE HMI
Firmware v6

THE STRONGEST LINK.

STAHL

REMOTE HMI V6 WITH REMOTE DEVICE MANAGER

Industrial-grade Thin Client firmware with central configuration software

EXICOM



F3 F4 F5 F6 F7 F8



REMOTE HMI V6 AND REMOTE DEVICE MANAGER

STATE-OF-THE-ART THIN CLIENT FIRMWARE WITH CENTRAL PARAMETERISATION SOFTWARE

Our V6 Remote HMI firmware boasts unparalleled performance and the most reliable and securest Thin Client operating system ever.

Designed as a closed system on Windows® 10 IoT Enterprise, the remote firmware offers the latest remote desktop services with RDP 10 and VNC.

The unique app concept allows for additional functions and protocols such as CITRIX, browsers and any other applications to be incorporated with a maximum degree of security.

The Remote Device Manager complements the firmware and is used for central parameterisation and licence management.

TWO VERSIONS, ONE DEVICE MANAGER

BASIC

REMOTE HMI V6 BASIC VERSION

Access rights management
Auto connect function
Network diagnosis function
Teaming function
Network connection test
Resolutions from VGA to QSXGA
Clean display function
Touchscreen calibration
Security
Multi-monitor function
RDP/VNC function

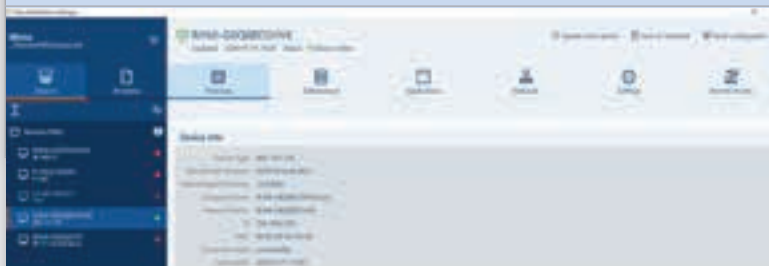
PRO

REMOTE HMI V6 PRO VERSION

Multi-session mode
App concept
Access rights management
Auto connect function
Network diagnosis function
Teaming function
Network connection test
Resolutions from VGA to QSXGA
Clean display function
Touchscreen calibration
Security
Multi-monitor function
RDP/VNC function

REMOTE HMI DEVICE MANAGER

All Thin Clients in the network can be configured from one workstation



SIMPLE OPERATION

The development of the entire firmware has been guided by the aim of “intuitive operation”, making its content and all symbols easy to understand without further explanation.

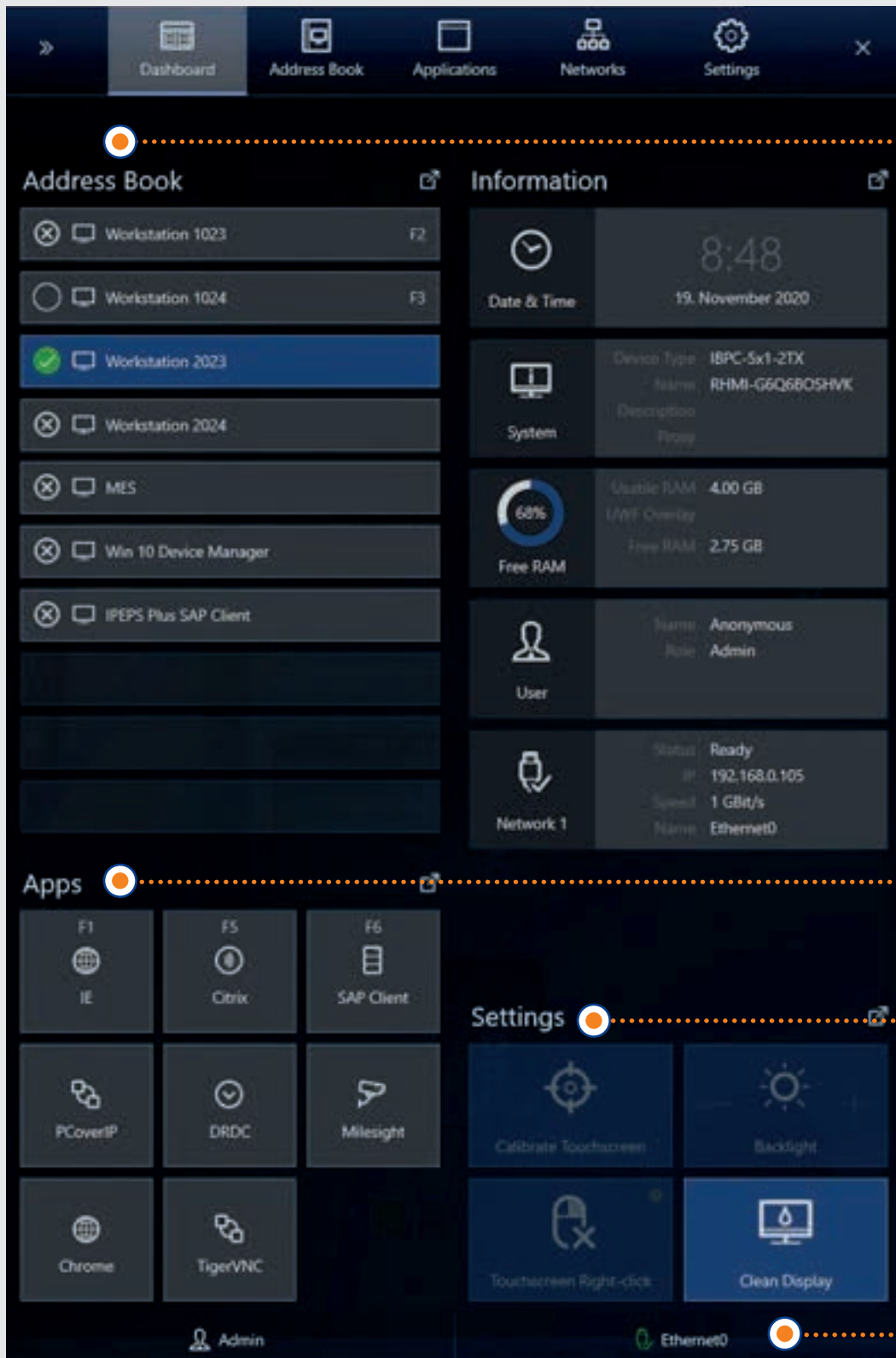


Image shows Remote HMI V6 Pro version

ADDRESS BOOK

- Simple, intuitive switching between workstation and servers.
- Parameterisation of primary connections.
- Display of availability of workstations and servers.

INTUITIVE APP CONCEPT (PRO)

- Simple start-up of parameterised applications in kiosk mode.
- Users cannot access Windows level.
- Examples: Citrix, DRDC, browsers, CCTV app, ERP system and many more.

USER-FRIENDLY BASIC SETTINGS

- Touchscreen calibration.
- Brightness adjustment.
- Parameterisation of right mouse button.
- Deactivation of all input devices for cleaning purposes.

NETWORK DIAGNOSIS

- Immediately available status display of all existing network connections.
- Diagnosis for address conflicts.



FUNCTIONS OVERVIEW

SECURE – SIMPLE – RELIABLE


Our new REMOTE FIRMWARE has been developed with the motto: SECURE – SIMPLE – RELIABLE to meet the most exacting requirements with regard to security, reliability and simplicity.

Each function comes under the heading of one of these premises.

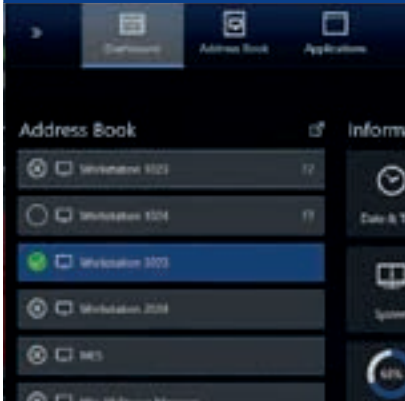
The closed system, Windows 10 IoT Enterprise, SSD write protection and customised concepts ensure the highest SECURITY for the communication with the Thin Client network structure.


The intuitive menu structure, 1-click and touchscreen opera-

tion as well as the app concept contribute to the software's SIMPLICITY.

SECURE	BASIC	PRO
	<p>CLOSED SYSTEM</p> <ul style="list-style-type: none"> • No access to Windows shell for users. • Different user passwords and administrator passwords. <p>WRITE PROTECTION FOR SSD</p> <ul style="list-style-type: none"> • The Unified Write Filter (UWF) ensures that the SSD is write-protected during operations and that users or hackers cannot corrupt the image of the device. <p>CUSTOMISED SECURITY CONCEPTS</p> <ul style="list-style-type: none"> • Support of all virus scanners and security certificates. • Patch management possible via WSUS. • Integration into existing update structures of the control system computers. • Possible domain integration of the Thin Client. 	<p>✓</p> <p>✓</p> <p>✓</p>
	<p>BASED ON WINDOWS 10 IOT ENTERPRISE</p> <ul style="list-style-type: none"> • Long-term support (10 years by Microsoft). • Microsoft: no feature updates. • Integrated write filter protecting the operating system and the Remote HMI firmware. • USB filter limits the use of USB to approved devices. • Blocked hotkeys prevent inadvertent access to system functions. • Latest Remote Desktop Protocol (RDP), 10.2, compatible with older protocol versions. 	<p>✓</p> <p>✓</p>



SIMPLE	BASIC	PRO
		
<p>INTUITIVE APP CONCEPT</p> <ul style="list-style-type: none"> Multi-session mode, multiple connections (e.g. RDP) available simultaneously. 		✓
<p>SIMPLE MENU STRUCTURE</p> <ul style="list-style-type: none"> Only those functions/items are displayed that are relevant to the current configuration. User interface optimised for touchscreen operation. Integrated on-screen keyboard. 1-click operation without many sub-menus. 	✓	✓
<p>OPTIMUM OPERATION FOR EVERY DISPLAY SIZE</p> <ul style="list-style-type: none"> Adjustable layout for all display sizes from 800 x 600 to 4K. Support of portrait and landscape mode. Multilingual virtual keyboards. Variable width of configuration menu. 	✓	✓

RELIABLE	BASIC	PRO
		
<p>ETHERNET REDUNDANCY</p> <ul style="list-style-type: none"> Supports cable redundancy with dual Ethernet interfaces via copper or FO. Support of WiFi as second or first channel. 	✓	✓
<p>AUTOMATIC RECONNECT</p> <ul style="list-style-type: none"> The connection for RDP and VNC is permanently monitored and re-established in the case of failure. 	✓	✓
<p>TEAMING FUNCTION</p> <ul style="list-style-type: none"> To increase speed or realise a redundancy. 	✓	✓

THE FUNCTIONS IN DETAIL

SYSTEM SETTINGS

The system settings give the user compact access to all parameters and functions necessary for the flexible operation of the system. You can adjust network and security settings, select a

keyboard layout and the display resolution, specify passwords for user management, configure the keyboard wedge for barcode scanners and much more besides.

In addition, it is also possible to carry out a system update via the network or a connected USB stick, as well as the export and import of the system configuration.

Information	
Main	
OS Image	RemoteHMI Rev 2.1.1 64-bit
RemoteHMI Firmware	V6.00.00 Build 8623
Device Type	IBPC-5x1-2TX
Series	Industrial Box-PC
OS License Class	Value
System	
OS	Windows 10 Enterprise 2016 LTSB (Not Activated)
OS Version	1607 Build 14393.2580
Processor	Intel(R) Core(TM) i5-8350U CPU @ 1.70GHz
RAM	4.00 GB total / 4.00 GB usable / 2.68 GB free
SSD Brand	VMware, VMware Virtual S SCSI Disk Device
SSD Space	30.00 GB total / 13.36 GB free
Display(s)	1
Touchscreen(s)	No UPDD supported touch controller detected

GENERAL INFORMATION

- General information on the system, device type and licence.

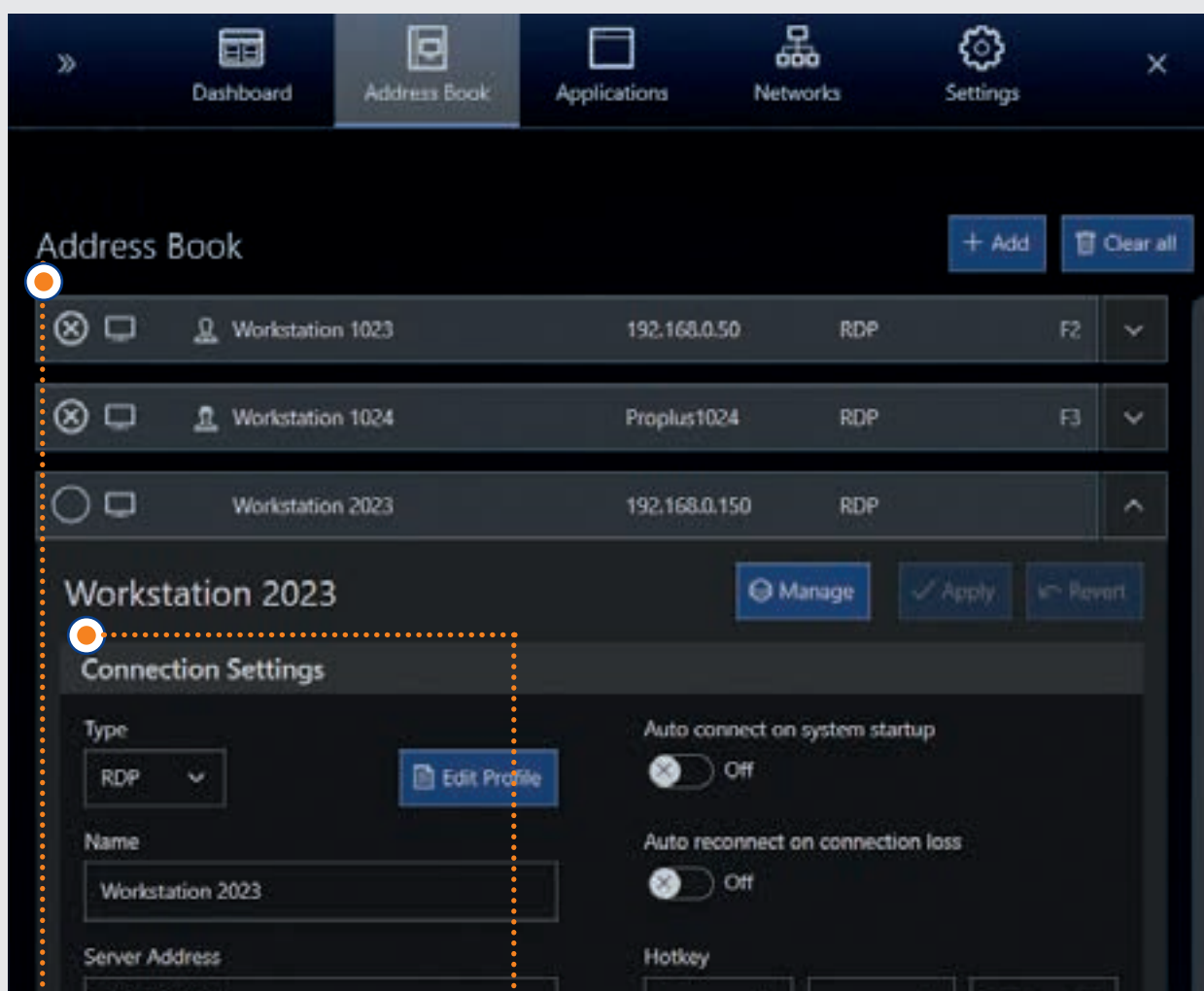
SYSTEM INFORMATION

- Detailed information on the operating system, version, processor, RAM and many other aspects.

ADDRESS BOOK

The address book provides a clearly laid-out, uniform and central configuration for all supported connection types. The input can be sorted in a meaningful way via drag & drop,

and for an overview of all available PCs and servers in the network to which a connection can be established via RDP or VNC.



CLEARLY LAID-OUT DISPLAY OF CONNECTIONS

- Connection name and status.
- IP address / computer name.
- Protocol.

CONNECTION DETAILS

- Details of connections in the network.

KEY POINTS

REMOTE HMI FIRMWARE V6

The latest 6.0 version of the REMOTE HMI firmware, included in the delivery of the SERIES 500 operating devices. The firmware is used to establish and secure remote connections to one or

more workstations or application servers, thus enabling remote access from one operating station to one or more workstations or servers.

REMOTE FIRMWARE V6 FUNCTIONS

ACCESS RIGHTS	3-tiered access rights management ADMIN / ENGINEER / OPERATOR system settings and installation of applications by administrator only.
AUTO CONNECT	Automatic connection to the host after start-up.
NETWORK DIAGNOSIS	Detection of network or host failure.
TEAMING (BACKUP)	Redundancy due to automatic switch to a different network adapter.
NETWORK CONNECTION TEST	Integrated ping function to monitor the remote connection.
RESOLUTIONS	640 x 480 (VGA) up to 2560 x 2048 (QSXGA) adapted.
MULTI-MONITOR	The multi-monitor mode can be used to spread process information over up to six monitors.
CLEAN DISPLAY	Disabling the touchscreen function for cleaning purposes.
TOUCHSCREEN CALIBRATION	Customisation of the touchscreen by the user (brightness, right mouse button, calibration).
SECURITY	In addition to pre-installed Windows Defender virus protection, a HORM and a UWF filter for drive protection and fast start of system files protect the system integrity. Individual USB ports can be locked or unlocked via USB lockdown.
RDP/VNC	For fail-safe, flexible access to virtual, real or cloud-based workstations from any HMI station in hazardous and industrial areas. Individual workstations that are not connected to the process network can be integrated via KVM-over-IP.

THE FOLLOWING FUNCTIONS ARE ONLY AVAILABLE WITH A PRO LICENCE

MULTI-SESSION MODE	Parallel remote connections enabling users to switch fast between connections, or allowing for the simultaneous display on a split screen.
APP CONCEPT	Fast access to applications and application programs.

REMOTE HMI DEVICE MANAGER

The latest firmware version features a new option for the configuration, maintenance and upgrade of all Thin Clients in the network from a central workstation via the Remote HMI Device Manager.



GLOBAL SERVICE



We cannot be everywhere. But we can give you helpful advice tailored to your needs wherever you are. Using modern communication tools such as video chats, we present and discuss with you possible system solutions.



Our Support team will support you in all matters concerning commissioning and system configuration.

TECHNICAL SUPPORT

R. STAHL HMI
T +49 221 768 065 000
support.dehm@r-stahl.com
r-stahl.com/de/hmi



R. STAHL
Am Bahnhof 30
74638 Waldenburg, Germany
T +49 7942 943-0
F +49 7942 943-4333
r-stahl.com

Follow us:

-  R. STAHL Group
-  R. STAHL Group
-  @rstahlgroup